



OPQIC

OKLAHOMA PERINATAL **QUALITY**
IMPROVEMENT COLLABORATIVE

OKLAHOMA PERINATAL **QUALITY**
IMPROVEMENT COLLABORATIVE

Updates on Perinatal Measures

The Performance Measures . . .

PC-01: Elective Delivery

PC-02: Cesarean Birth

PC-05: Exclusive Human Milk Feeding

PC-06: Sudden Infant Complications

PC-07: Severe Obstetric Complications

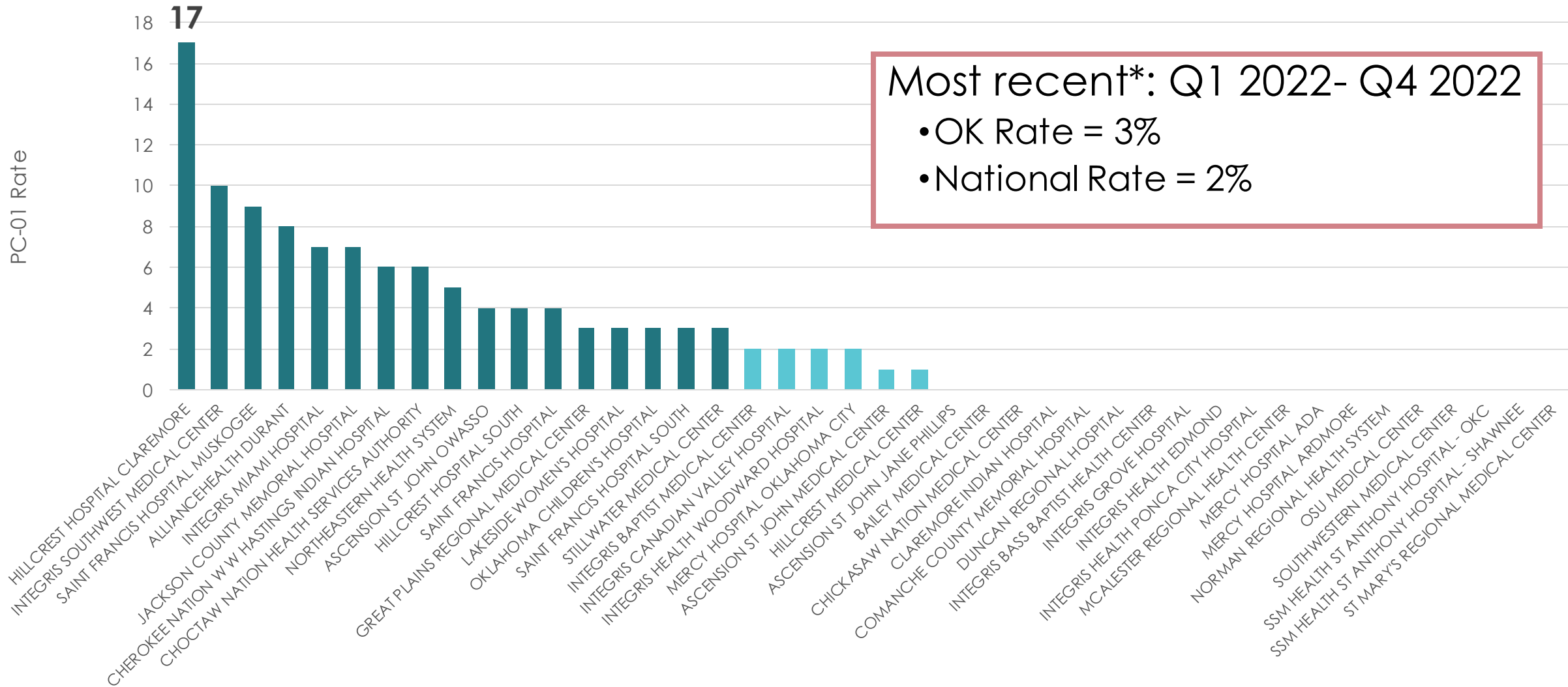
PC-01 Elective Delivery

Description: Elective vaginal deliveries or elective cesarean births at ≥ 37 and < 39 weeks of gestation completed

Numerator	Patients with elective deliveries
Denominator	Patients delivering newborns with ≥ 37 and < 39 weeks of gestation completed



PC-01: Elective Delivery (CMS)



*Data Released Nov 8, 2023

PC-02 Cesarean Birth (NTSV)

Description: Nulliparous women with a term, singleton baby in a vertex position delivered by cesarean birth

Numerator

Inpatient hospitalizations for patients who deliver by cesarean section

Denominator

Nulliparous patients with delivery of a live term singleton newborn in vertex presentation

PC-02: Cesarean Birth (NTSV)

PC-02 Rates among TJC Accredited Hospitals Q1 2021-Q4 2021

Ascension St. John Owasso: **38.3%**

Southwestern Medical Center: **36.4%**

INTEGRIS Health Canadian Valley Hospital: **32.1%**

TJC Target Rate < 30%

HP 2030 Target = 23.6%

OK Rate = 25%

US Rate = 25.7%

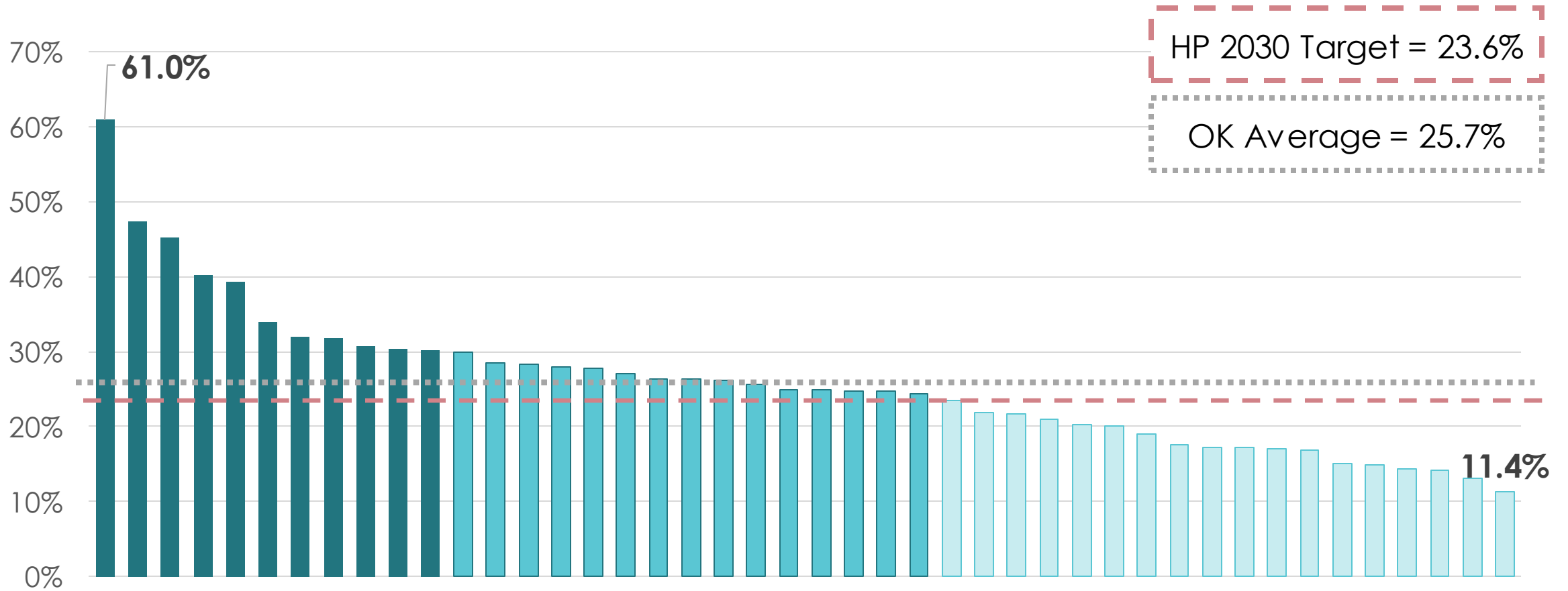
The Joint Commission Health Care Quality Data Download

The following screens will allow you to download performance measure results for the
January 2021 - December 2021 reporting period.

This data download was last updated June 22, 2023

NTSV Cesarean Delivery Rates by Facility

Provisional 2022 Birth Certificate Data



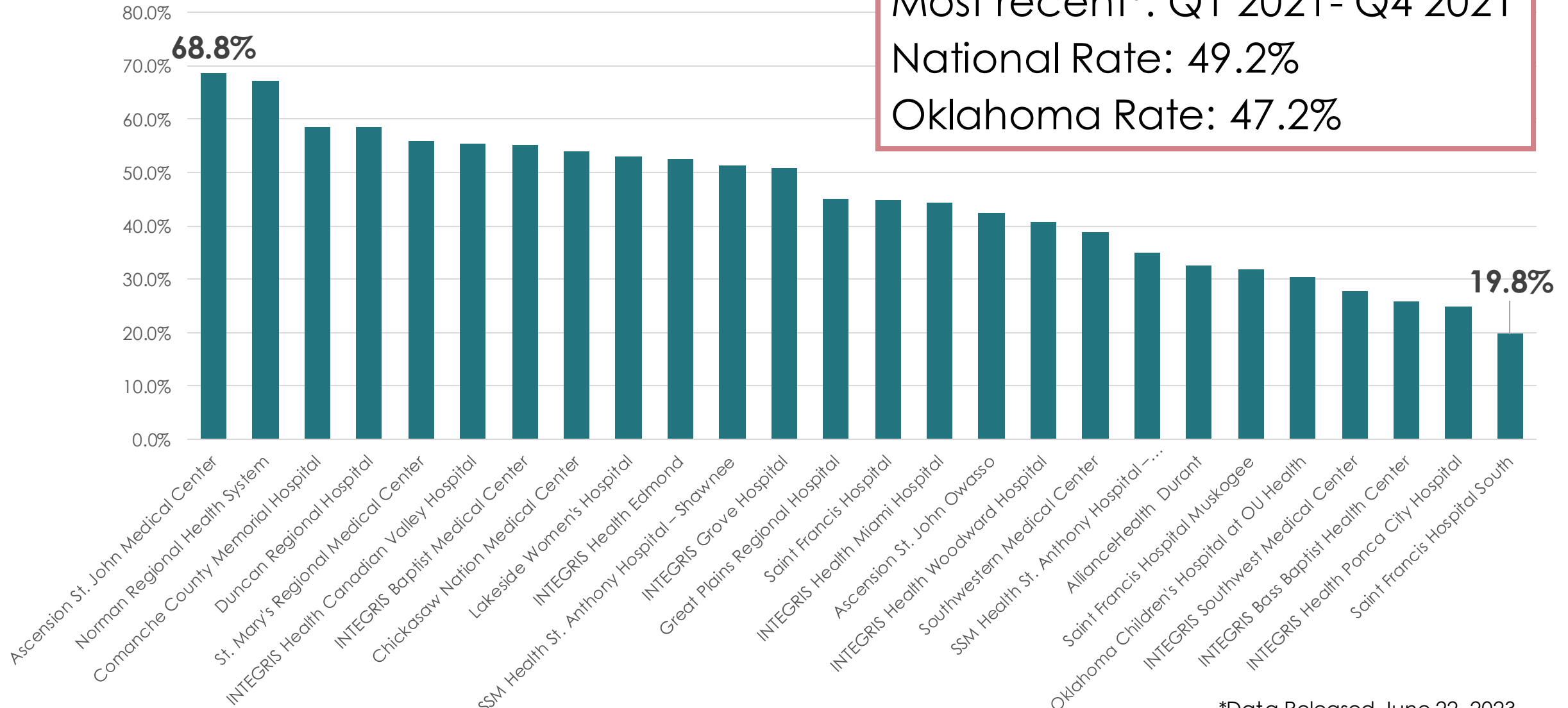
PC-05 Exclusive Human Milk Feeding

Description: Exclusive human milk feeding during the newborn's entire hospitalization

Numerator	Newborns that were fed human milk only since birth
Denominator	Single term newborns discharged alive from the hospital

PC-05: Exclusive Human Milk Feeding (TJC)

Most recent*: Q1 2021- Q4 2021
 National Rate: 49.2%
 Oklahoma Rate: 47.2%



*Data Released June 22, 2023

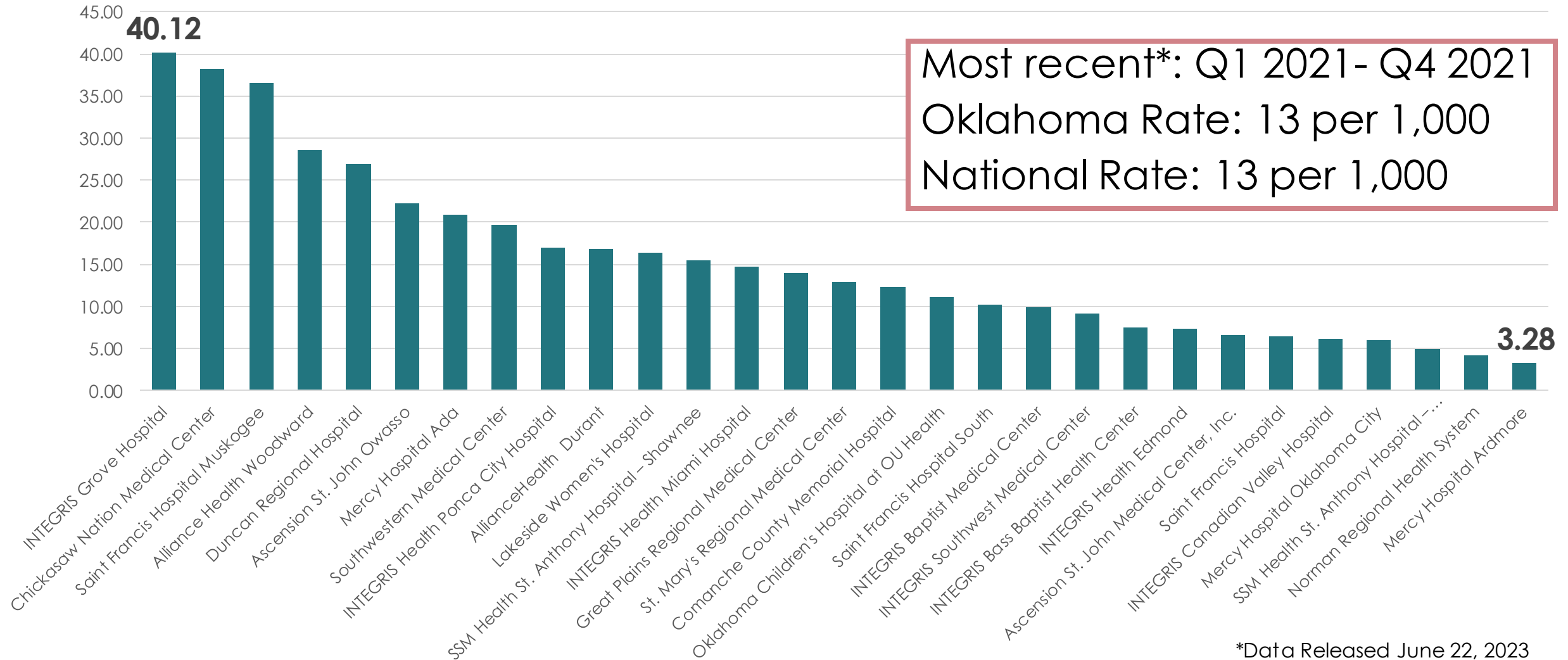
PC-06 Unexpected Complications in Term Newborns

Description: The percent of infants with unexpected newborn complications among full term newborns with no preexisting conditions

Numerator	Newborns with severe and/or moderate complications
Denominator	Liveborn, singleton, term newborns ≥ 2500 g in birth weight

PC-06: Unexpected Complications of the Newborn – Severe (TJC)

(rate per 1,000 births)



*Data Released June 22, 2023

ePC-07 Severe Obstetric Complications

Description: Patients with severe obstetric complications which occur *during* the inpatient delivery hospitalization

Numerator	Inpatient hospitalizations for patients with severe obstetric complications
Denominator	Inpatient hospitalizations for patients delivering stillborn or live birth with >-20 weeks, 0 days gestation completed

ePC-07: SOC Numerator

SMM Diagnoses

Cardiac

- Acute heart failure*
- Acute myocardial infarction
- Aortic aneurysm
- Cardiac arrest/ventricular fibrillation
- Heart failure/arrest during procedure or surgery

Hemorrhage

- Disseminated intravascular coagulation
- Shock

Renal

- Acute renal failure

Respiratory

- Adult respiratory distress syndrome
- Pulmonary edema*

Sepsis

Other OB

- Air and thrombotic embolism
- Amniotic fluid embolism
- Eclampsia
- Severe anesthesia complications

Other Medical

- Puerperal cerebrovascular disorder
- Sickle cell disease with crisis

SMM Procedures

- Blood transfusion*
- Conversion of cardiac rhythm
- Hysterectomy
- Temporary tracheostomy
- Ventilation

Discharge Disposition

- Discharge disposition of Expired

NOT PRESENT ON ARRIVAL



Reporting Requirements

	CMS IQR	TJC ORYX	TJC ACPC
PC-01: Elective Delivery	required CY 2023 <i>RETIRED</i> CY 2024	optional 2024	required
PC-02: Cesarean Birth	voluntary CY 2023 mandatory CY 2024	eCQM req. 2024	required with thresholds
PC-05: Exclusive Human Milk Feeding	required CY 2023 <i>RETIRED</i> CY 2024	optional 2024	required
PC-06: Sudden Infant Complications	---	either chart or eCQM required 2024	required with thresholds
PC-07: Severe Obstetric Complications	voluntary CY 2023 mandatory CY 2024	eCQM req. 2024	---

CMS IPPS 2024 Final Rule Issued August 2023

TJC ORYX 2024 Performance Measure Reporting Requirements issued October 2023



CMS Maternal Morbidity Structural Measure

The new Maternal Morbidity Structural Measure has been finalized in the Centers for Medicare and Medicaid Services (CMS) 2022 Inpatient Prospective Payment System (IPPS) Final Rule. The measure is intended to determine the number of hospitals currently participating in a state or national perinatal quality collaboratives (PQCs) and whether hospitals are implementing the safety practices or bundles included as part of these initiatives. Such programs have shown to be effective in decreasing maternal morbidity and the quality of obstetric care delivery.^{[1](#), [2](#)}

Will this affect my reimbursement?

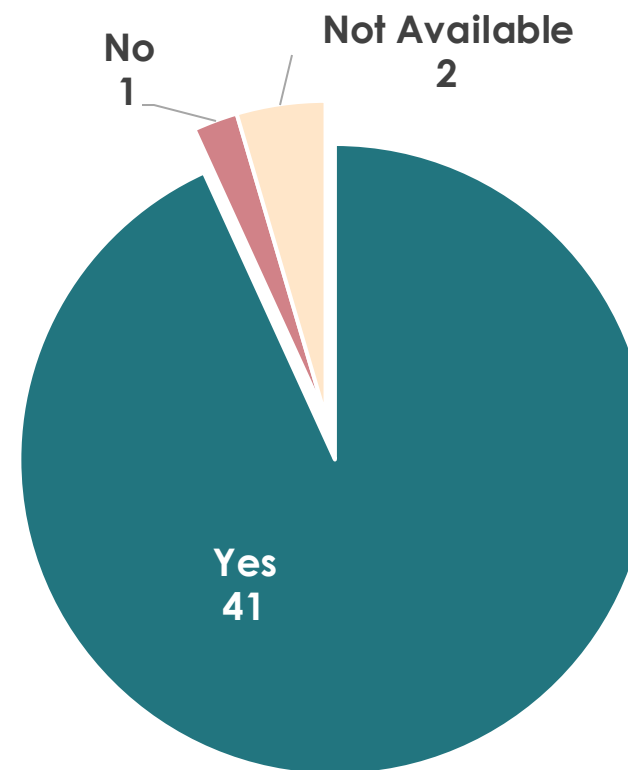
Reporting of this new measure could have an impact on payment determinations beginning in FY 2023, based on the initial reporting period of October 1, 2021 to December 31, 2021. Subsequent payment determinations will be based on a full year's worth of data. Impact on individual provider reimbursement will be dependent on the provider's contract negotiated with their hospital or facility.

CMS Structural Measure 7

Question: Does your hospital or health system participate in a Statewide and/or National Perinatal Quality Improvement Collaborative Program aimed at improving maternal outcomes during inpatient labor, delivery and post-partum care, **AND** has implemented patient safety practices or bundles related to maternal morbidity to address complications, **including**, but not limited to, **hemorrhage, severe hypertension/preeclampsia or sepsis?**

Answer Choices: (A) Yes, (B) No, or (C) N/A (our hospital does not provide inpatient labor/delivery care)

SM-7: Q1-Q4 2022



Press release

Biden-Harris Administration Launches 'Birthing-Friendly' Designation on Web-Based Care Compare Tool

Nov 08, 2023 | Compare websites, Hospitals, Quality

Share



User-friendly tool helps identify hospitals and health systems committed to providing high-quality maternity care



Maternal health

 Print

These measures aim to improve maternal health. By providing care to pregnant individuals that follows best practices that advance health care quality, safety, and...

[Read more](#)

[Find out why these measures are important](#)

[Get more information about the data](#)

[Get current data collection period](#)

Percentage of mothers whose deliveries were scheduled too early (1-2 weeks early), when a scheduled delivery wasn't medically necessary

↓ Lower percentages are better

2% ²
of 47 patients

National average: 2% ²⁶
Oklahoma average: 3% ²⁶

Elective Delivery

Whether a hospital participated in a state or national program aimed at improving maternal and child health

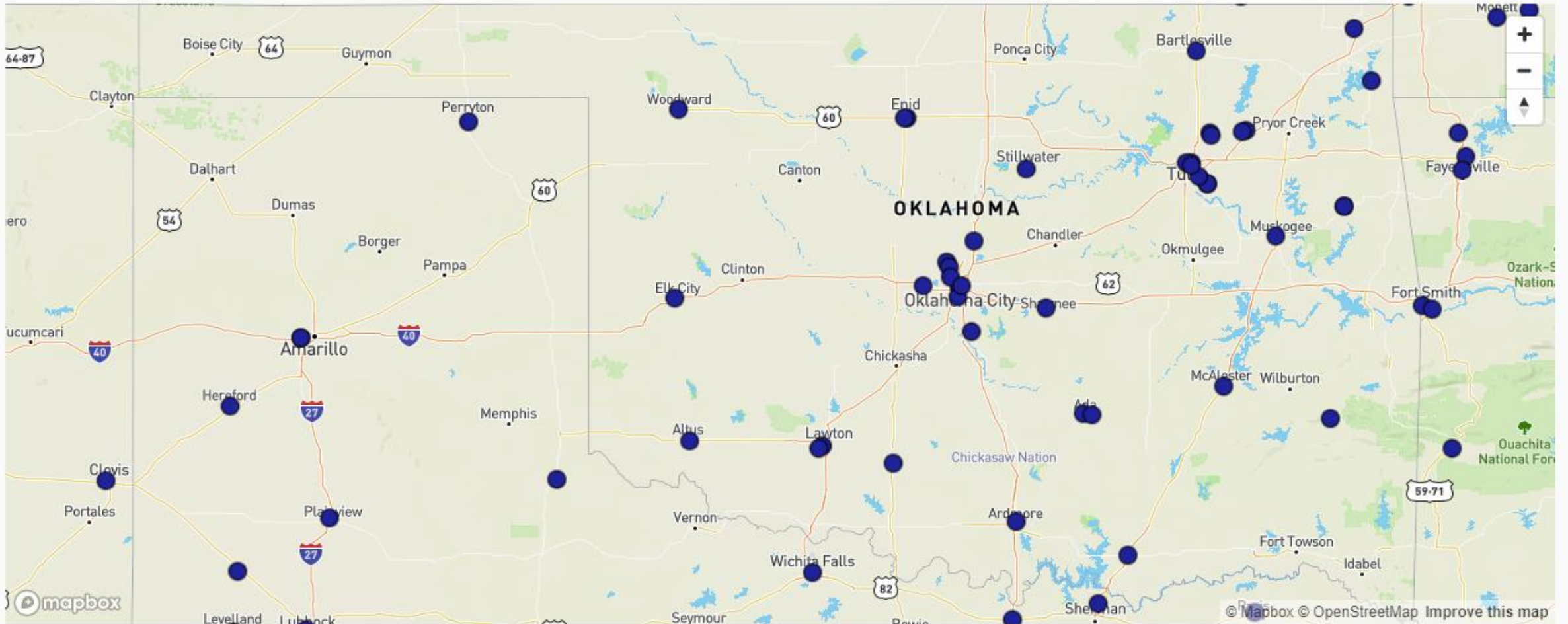
Yes

Maternal Morbidity
Structure Measure

Find Birthing-Friendly Hospitals and Health Systems

The map below shows Birthing-Friendly hospitals and health systems throughout the United States. Users can search by city, state, or zip code to find a hospital or health system with the designation in their area. The map is interactive; users can zoom and select a data point to see address information.

Oklahoma, United States



OKLAHOMA PERINATAL **QUALITY**
IMPROVEMENT COLLABORATIVE

Hospital Recognition

Providing Excellence in Perinatal Care

2023 Areas of Hospital Recognition

1. PC-01 (Early Elective Delivery) at or below national average
2. Baby-Friendly Designation
3. Safe Sleep Hospital Certifications
4. Active participation in OMNO
5. TeamBirth Participation
6. The Joint Commission Perinatal Care Certification



PC-01 \leq 2% : Q1 2022 – Q4 2022

ASCENSION ST JOHN JANE PHILLIPS

ASCENSION ST JOHN MEDICAL CENTER

BAILEY MEDICAL CENTER

CHICKASAW NATION MEDICAL CENTER

CLAREMORE INDIAN HOSPITAL

COMANCHE COUNTY MEMORIAL HOSPITAL

DUNCAN REGIONAL HOSPITAL

HILLCREST MEDICAL CENTER

INTEGRIS HEALTH BAPTIST MEDICAL CENTER

INTEGRIS BASS BAPTIST HEALTH CENTER

INTEGRIS HEALTH CANADIAN VALLEY HOSPITAL

INTEGRIS HEALTH GROVE HOSPITAL

INTEGRIS HEALTH EDMOND

INTEGRIS HEALTH PONCA CITY HOSPITAL

INTEGRIS HEALTH WOODWARD HOSPITAL

MCALESTER REGIONAL HEALTH CENTER

MERCY HOSPITAL ADA

MERCY HOSPITAL ARDMORE

MERCY HOSPITAL OKLAHOMA CITY

NORMAN REGIONAL HEALTH SYSTEM

OSU MEDICAL CENTER

SOUTHWESTERN MEDICAL CENTER

SSM HEALTH ST ANTHONY HOSPITAL - OKC

SSM HEALTH ST ANTHONY HOSPITAL - SHAWNEE

ST MARY'S REGIONAL MEDICAL CENTER



Oklahoma's 11 Baby-Friendly Hospitals!

- Claremore Indian Hospital (6/13, 11/18)
- INTEGRIS Baptist Medical Center (1/15, 3/23)
- Cherokee Nation W.W. Hastings Hospital (7/15, 1/22)
- Comanche County Memorial Hospital (10/15, 3/20)
- INTEGRIS Health Edmond (5/16)
- SSM Health St. Anthony Hospital - OKC (11/16, 1/23)
- Chickasaw Nation Medical Center (5/17, 7/23)
- INTEGRIS Canadian Valley Hospital (2/19)
- Oklahoma Children's Hospital at OU Health (12/19)
- Duncan Regional Hospital (1/22)
- SSM Health St. Anthony Hospital - Shawnee (1/22)



HOSPITAL CERTIFICATION PROGRAM

Gold Level (4):

- Chickasaw Nation Medical Center
- Hillcrest Medical Center
- Norman Regional Health System
- Oklahoma Children's Hospital at OU Health

Silver Level (9):

- **Bailey Medical Center**
- **Choctaw Nation Medical Center**
- Duncan Regional Hospital
- INTEGRIS Baptist Medical Center
- INTEGRIS Southwest Medical Center
- Mercy Hospital Oklahoma City
- Northeastern Health System
- SSM Health St. Anthony Hospital – Shawnee
- Saint Francis Hospital

Bronze Level (13):

- Ascension St. John Jane Phillips
- Ascension St. John Medical Center
- Ascension St. John Owasso
- Comanche County Memorial Hospital
- INTEGRIS Bass Baptist Health Center
- INTEGRIS Canadian Valley Hospital
- INTEGRIS Health Edmond
- **INTEGRIS Miami Hospital**
- Jackson County Memorial Hospital
- Lakeside Women's Hospital
- **Saint Francis Hospital South**
- SSM Health St. Anthony Hospital - OKC
- Stillwater Medical Center





Ascension St. John Jane Phillips
Ascension St. John Medical Center
Comanche County Memorial Hospital
Duncan Regional Hospital
Hillcrest Medical Center
INTEGRIS Bass Baptist Health Center
INTEGRIS Health Baptist Medical Center
INTEGRIS Health Canadian Valley Hospital
INTEGRIS Health Edmond Hospital
INTEGRIS Health Grove Hospital
INTEGRIS Health Miami Hospital
Lakeside Women's Hospital
Mercy Hospital Oklahoma City
Norman Regional Health System
Oklahoma Children's Hospital at OU Health
Saint Francis Hospital

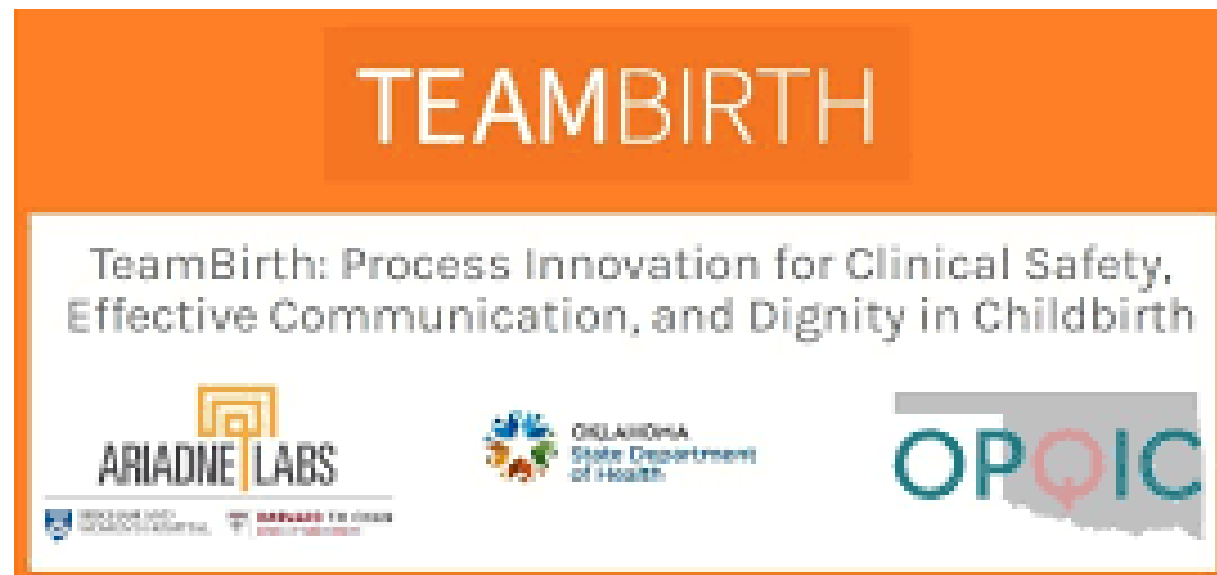


16 participating hospitals who have been actively engaged with frequent data entry and meeting attendance



Pilot Hospital - 2019

- Saint Francis Hospital, Tulsa



George Keiser Family Foundation Supported Hospitals - 2021

- Hillcrest Medical Center, Tulsa
- OSU Medical Center, Tulsa

TeamBirth Cohort 1 Hospitals Launched in March/April 2022

- Ascension St. John Medical Center, Tulsa
- Bailey Medical Center, Owasso
- Hillcrest Hospital Claremore
- Hillcrest Hospital South, Tulsa
- Mercy Hospital Oklahoma City
- Saint Francis Hospital, Tulsa
- Saint Francis Hospital Muskogee
- Saint Francis Hospital South, Tulsa
- St. Mary's Regional Medical Center, Enid

TeamBirth Cohort 2 Hospitals Launched in October 2022

- Ascension St. John Jane Phillips, Bartlesville
- Ascension St. John Owasso
- INTEGRIS Baptist Medical Center, OKC
- INTEGRIS Bass Baptist Health Center
- INTEGRIS Canadian Valley Hospital
- INTEGRIS Health Edmond
- INTEGRIS Miami Hospital
- McAlester Regional Health Center

TeamBirth Cohort 3 Hospitals Launched in March/April 2023

- Chickasaw Nation Medical Center
- Cherokee Nation WW Hastings Hospital, Tahlequah
- Mercy Hospital Ardmore
- Norman Regional Health System
- SSM Health St. Anthony Hospital - Oklahoma City
- SSM Health St. Anthony Hospital - Shawnee

TeamBirth Cohort 4 Hospitals

Launched this month!

- Comanche County Memorial Hospital
- Duncan Regional Hospital
- INTEGRIS Health Grove Hospital
- Jackson County Memorial Hospital
- Northeastern Health System

Ready to launch early 2024:

- INTEGRIS Health Ponca City Hospital
- Mercy Hospital Ada
- Oklahoma Children's Hospital at OU Health
- Stillwater Medical Center

TJC Perinatal Care Certification



Perinatal Care Certification

**Comanche County
Memorial Hospital**
June 2022



**Norman Regional
Health System**
May 2023

Special Recognition

Hospital Recognized in all 6 areas:

Comanche County Memorial Hospital

Hospitals Recognized in 5 areas:

- **Duncan Regional Hospital**
- **INTEGRIS Health Baptist Medical Center**
- **INTEGRIS Health Canadian Valley Hospital**
- **INTEGRIS Health Edmond Hospital**
- **Norman Regional Health System**

Spotlight Hospital Award 2024

- We would like to take suggestions for next year's Spotlight Hospital Awards.
- Please provide your ideas on your summit evaluation.

CONGRATULATIONS!

Warren M. Crosby Champion for Maternal and Infant Health



Trisha Short

**Clinical Implementation Specialist,
Ariadne Labs**