

# Every Week Counts

Oklahoma Aggregate Data

4th Quarter 2014: October – December 2014



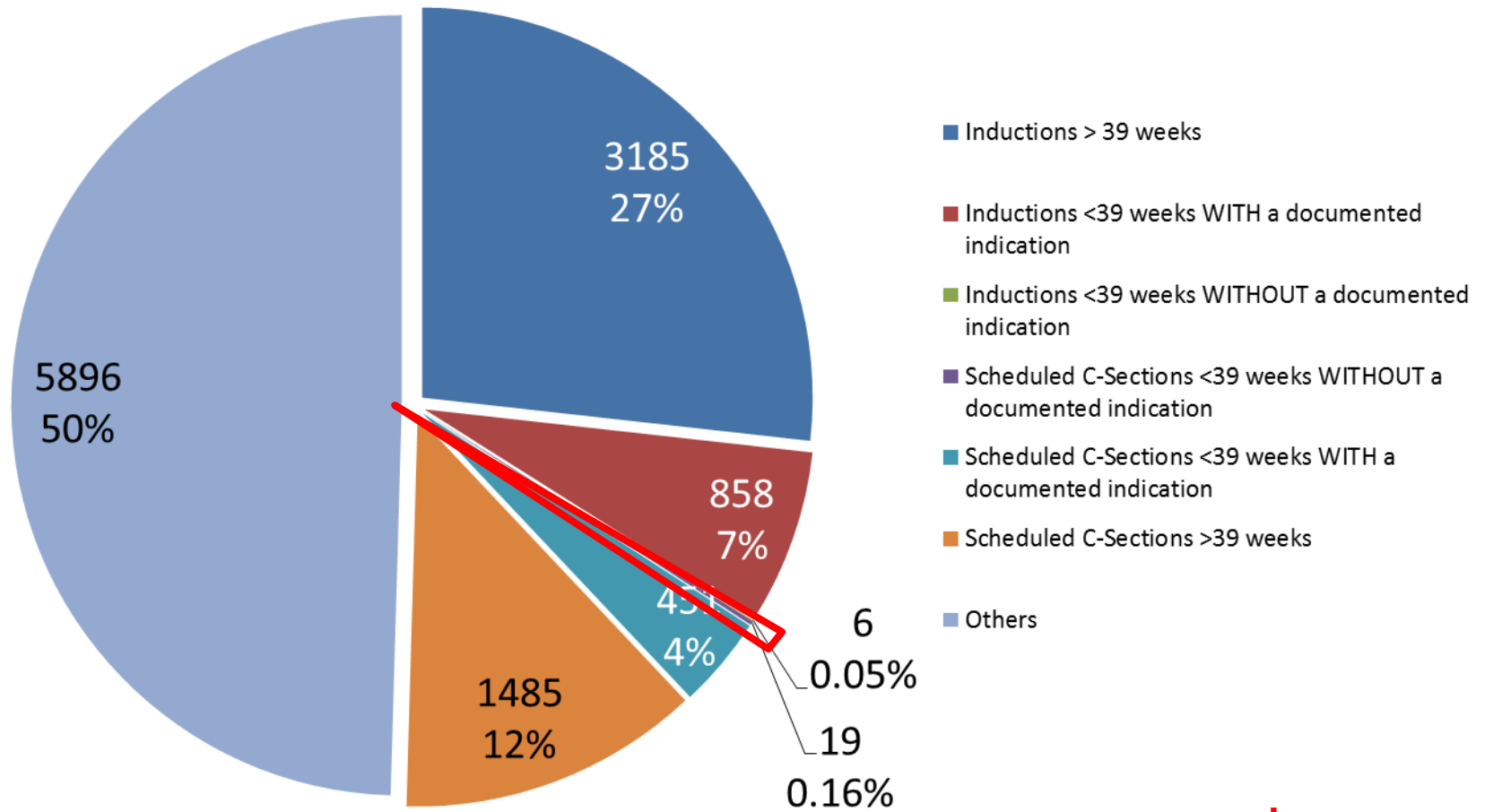
OKLAHOMA PERINATAL **QUALITY**  
IMPROVEMENT COLLABORATIVE

**Preparing**  
for a  
**Lifetime**  
It's Everyone's Responsibility

march  of dimes®

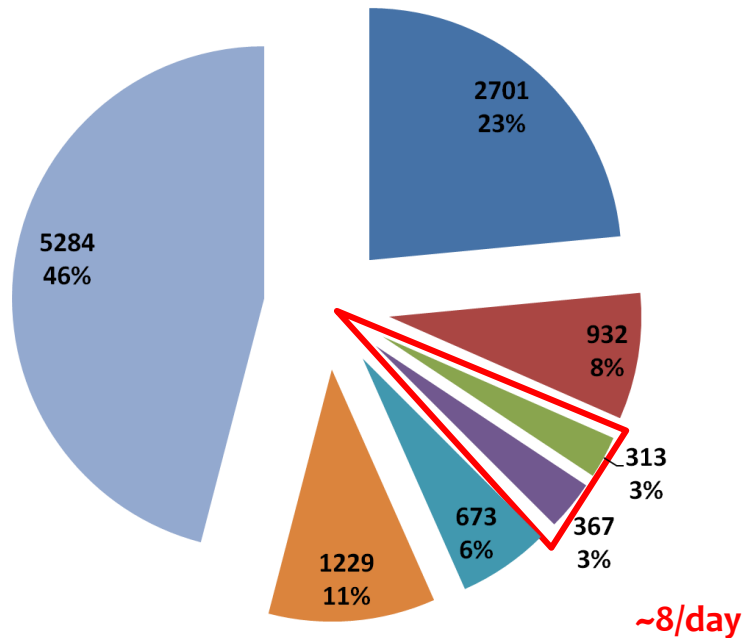
# Total Deliveries by Gestational Age and Documented Indication

October – December 2014



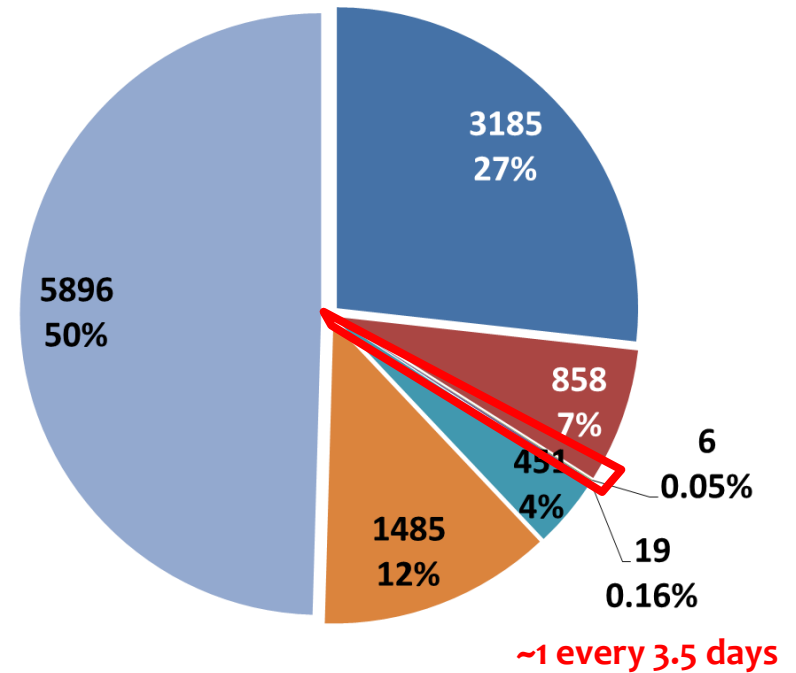
**~1 every 3.5 days**

# Total Deliveries by Gestational Age and Documented Indication



Qtr 1 2011: January 1 – March 31, 2011

- Inductions > 39 weeks
- Inductions < 39 weeks WITH a documented indication
- Inductions < 39 weeks WITHOUT a documented indication

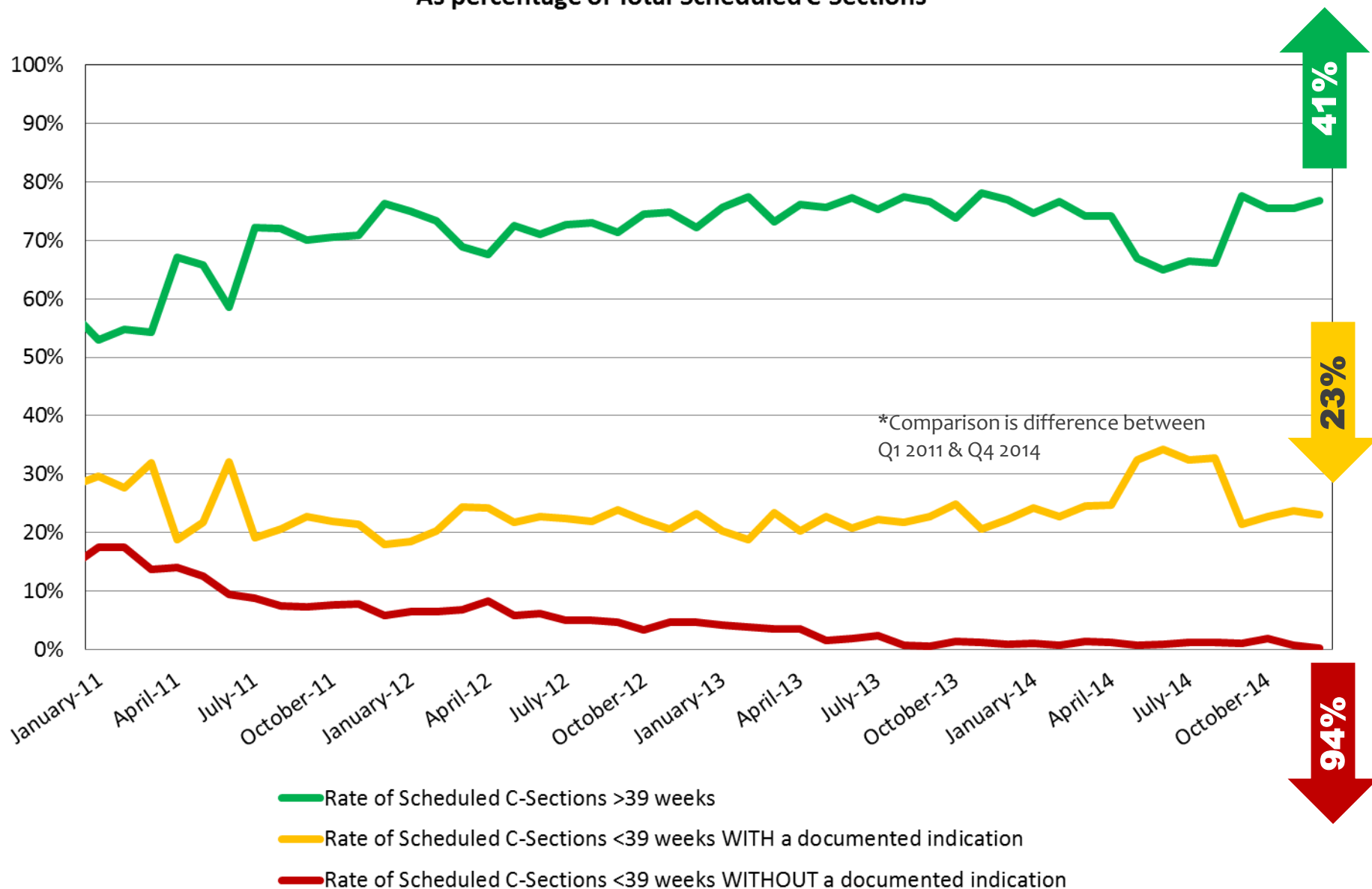


Qtr 4 2014: October 1 – December 31, 2014

- Scheduled C-Sections < 39 weeks WITHOUT a documented indication
- Scheduled C-Sections < 39 weeks WITH a documented indication
- Scheduled C-Sections > 39 weeks
- Others

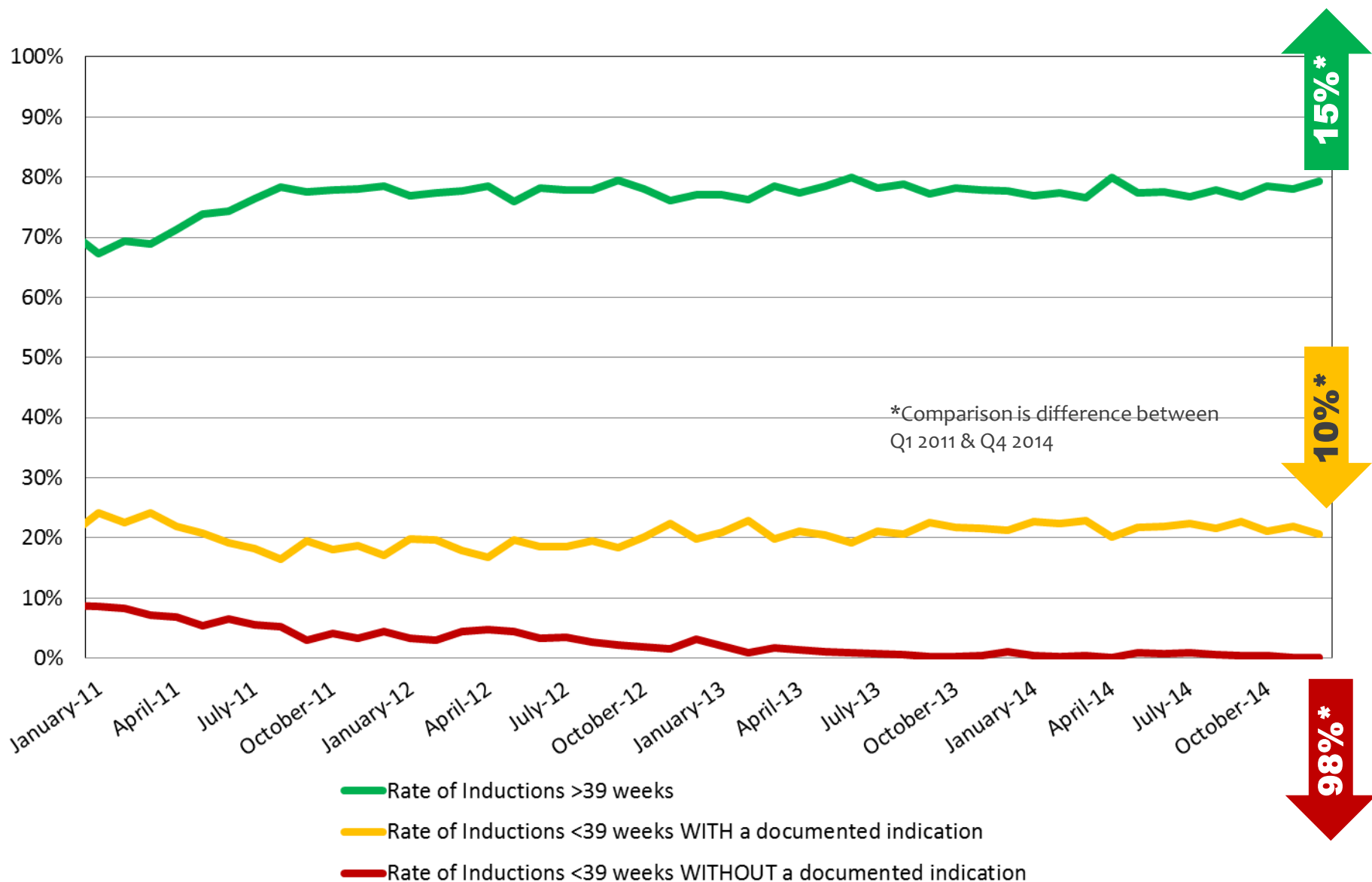
# Scheduled C-Section Rates by Gestational Age and Indication

## As percentage of Total Scheduled C-Sections

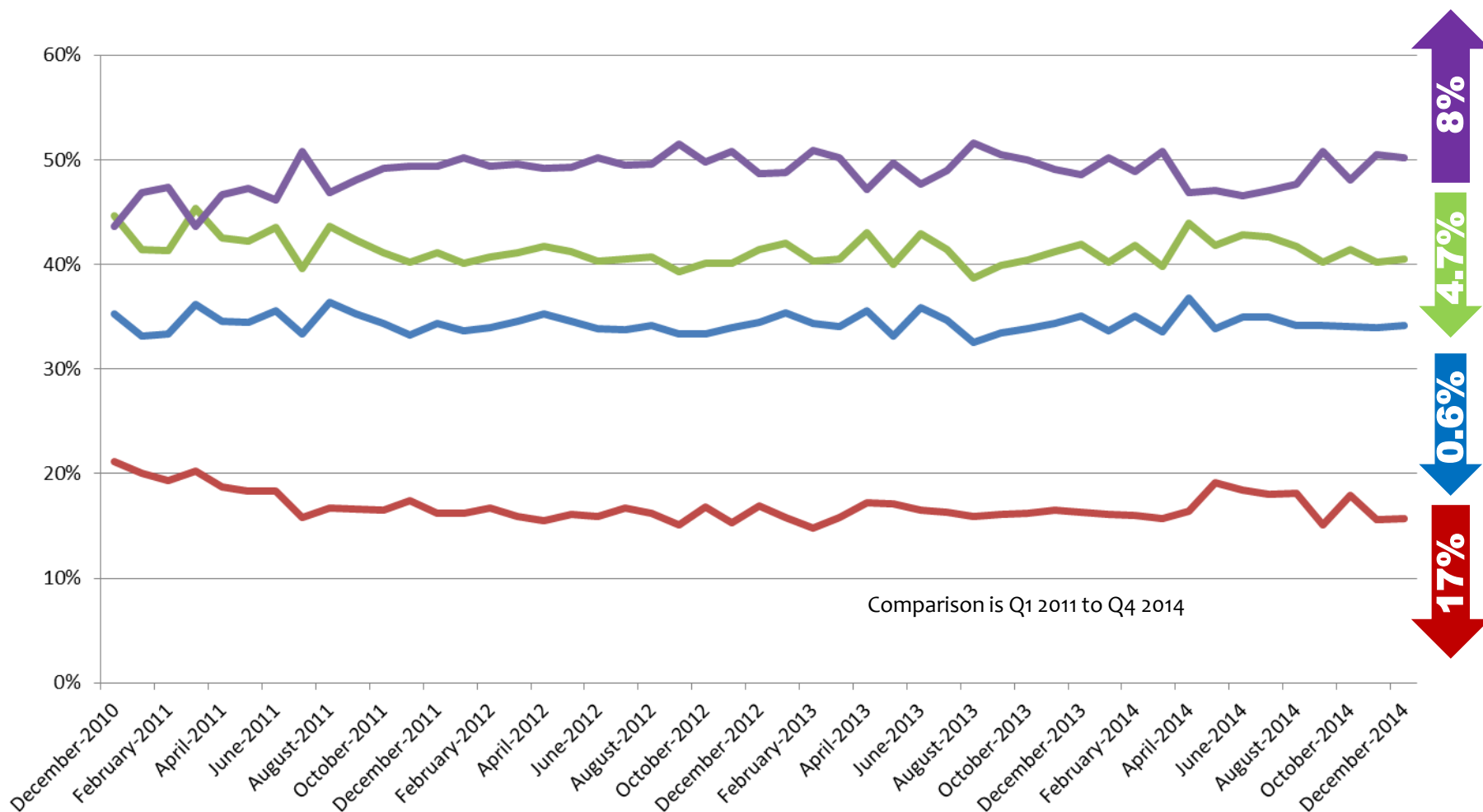


# Induction Rates by Gestational Age and Indication

as percentage of Total Inductions

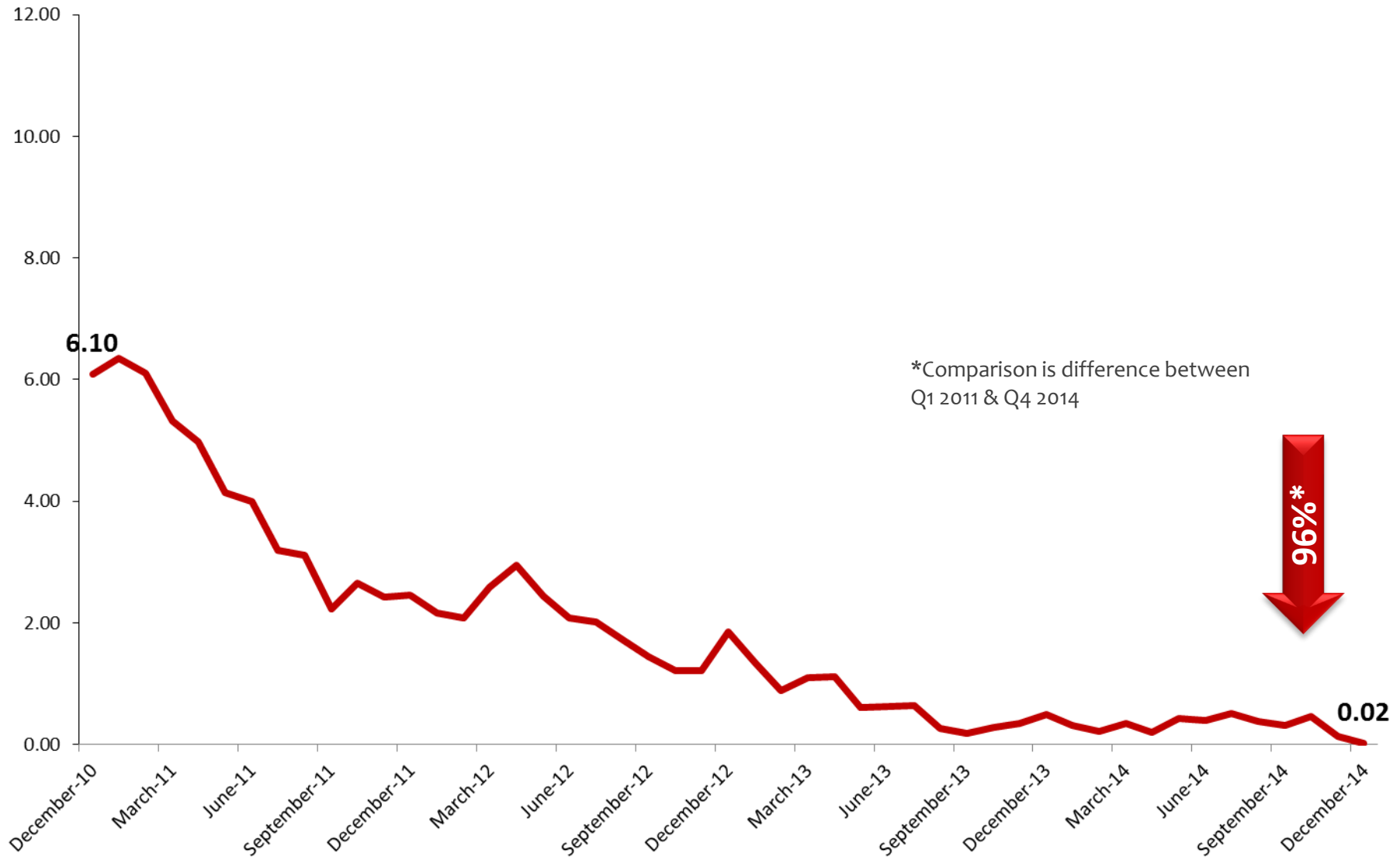


## Overall Rates by Method of Delivery



- Overall Induction Rate (as Percentage of Total Deliveries)
- Overall Scheduled C-Section Rate (as Percentage of Total Deliveries)
- Rate of Inductions for Potential Vaginal Deliveries (Inductions/(Total Deliveries - Scheduled C-Sections))
- Other ((Total Deliveries - Inductions & Scheduled C-Sections)/Total Deliveries)

# Scheduled C-Sections AND Inductions <39 Weeks WITHOUT a Documented Indication - as percentage of Total Deliveries

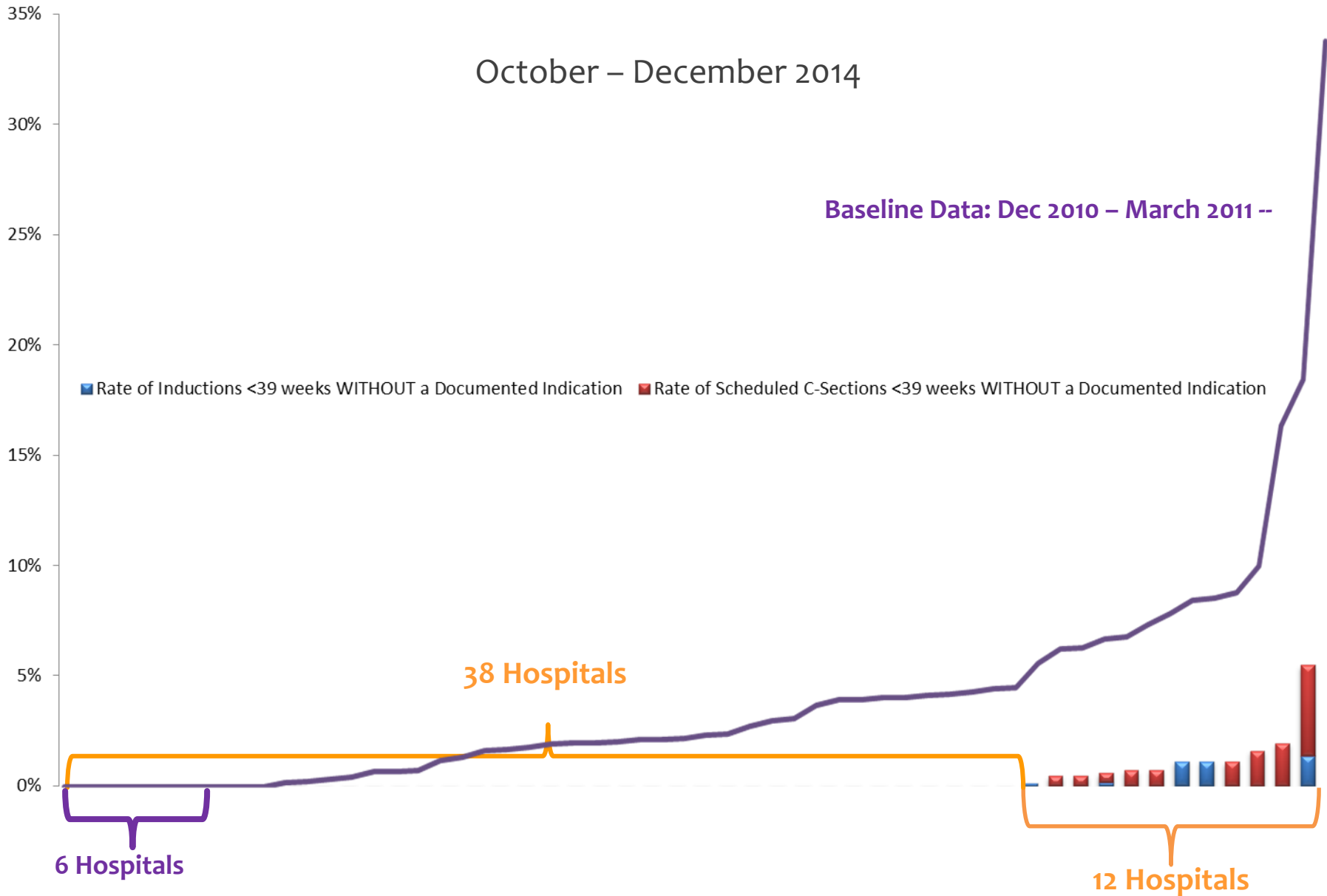


# Deliveries <39 Weeks WITHOUT a Documented Indication by Method

## By Hospital - as percent of Total Deliveries

October – December 2014

Baseline Data: Dec 2010 – March 2011 --

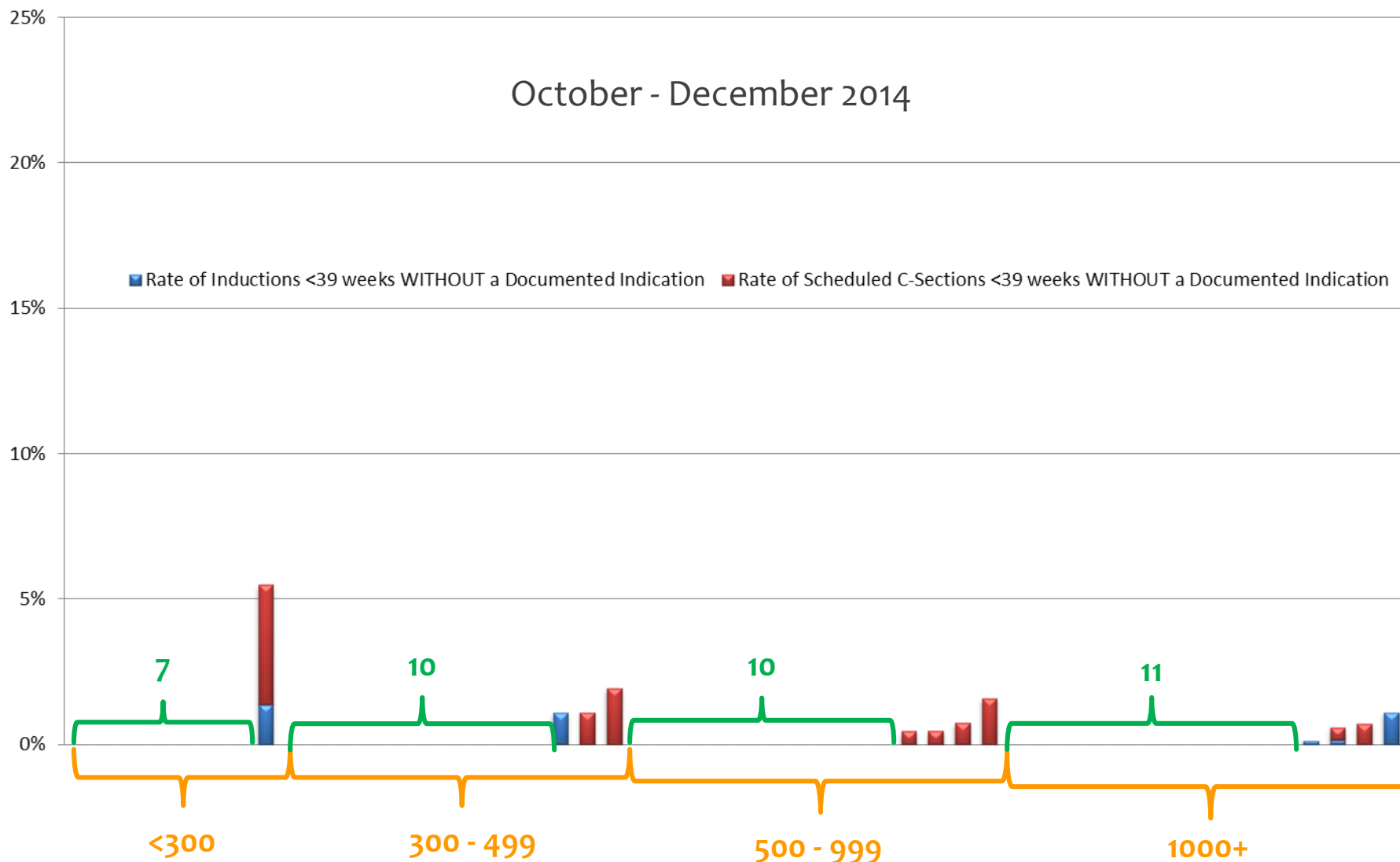




# Deliveries <39 Weeks WITHOUT a Documented Indication by Method

## By Hospital - as percent of Total Deliveries

October - December 2014

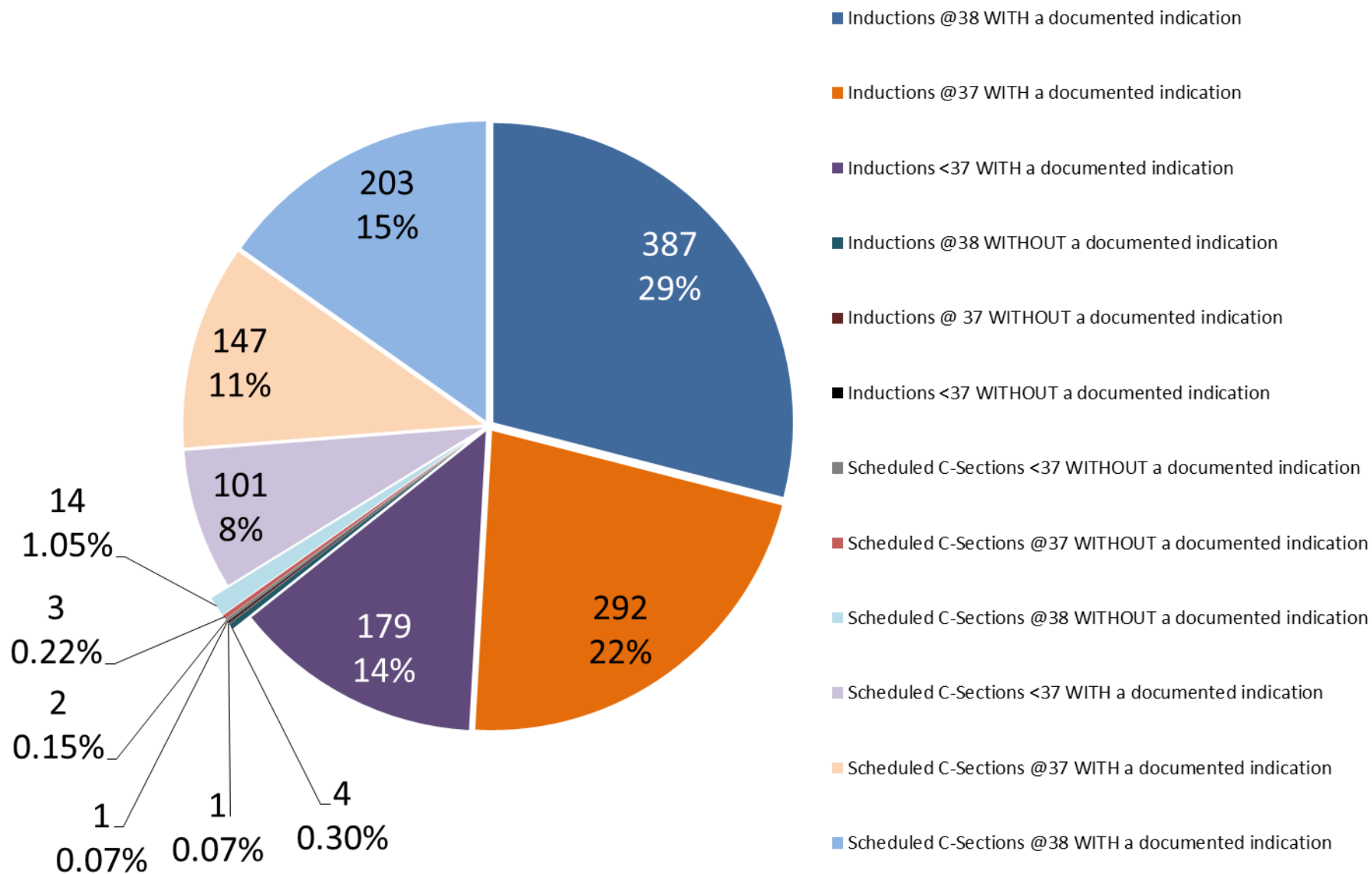


**ORANGE** number = approximate number of annual deliveries

**GREEN** number = number of hospitals reporting zero rate

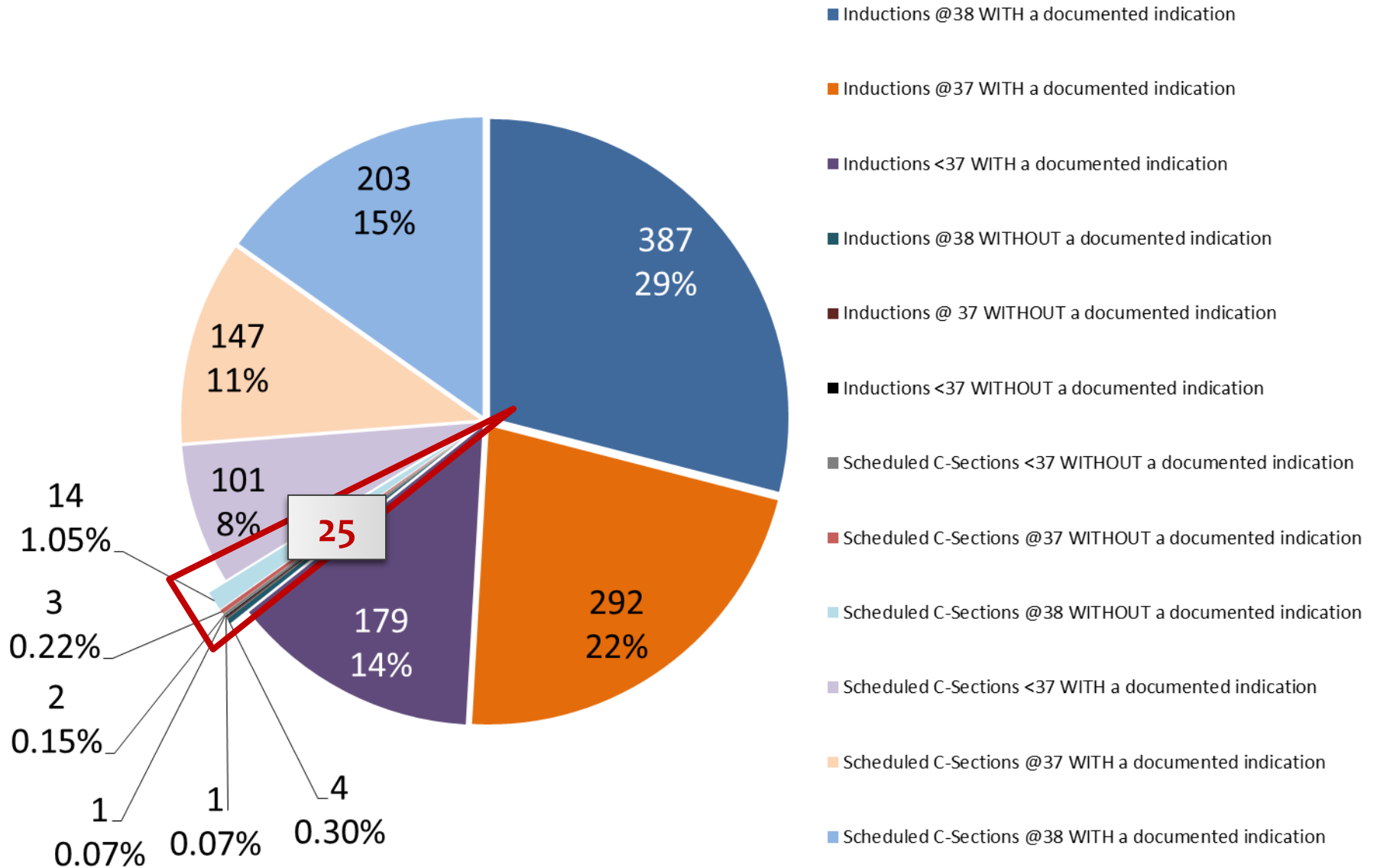
# Scheduled Deliveries <39 Weeks

October – December 2014



# Scheduled Deliveries <39 Weeks

October – December 2014



**1.9% of Scheduled Deliveries <39 weeks do **not** have a documented indication**

# TJC Perinatal Care Core Measure \*

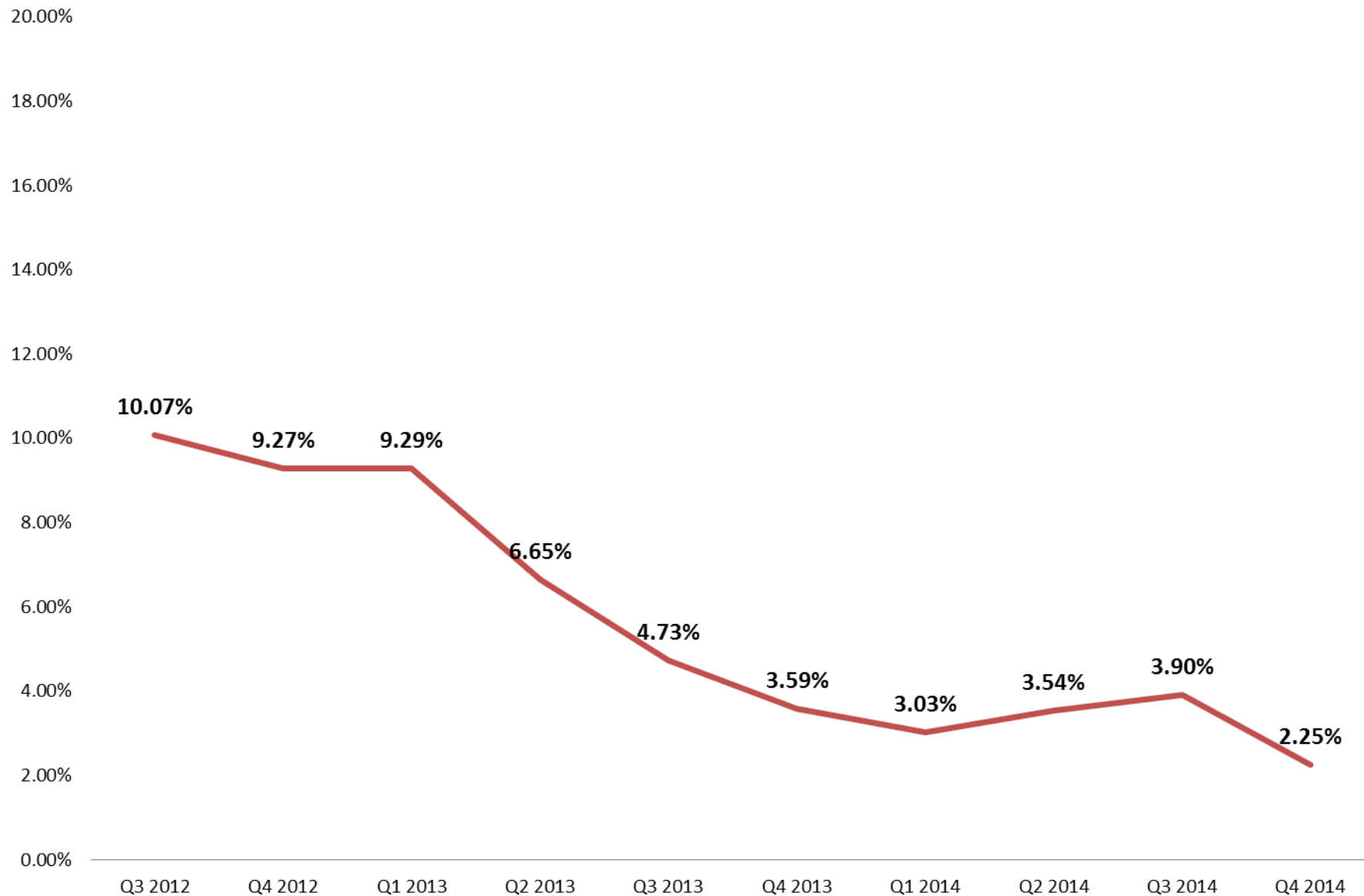


OKLAHOMA PERINATAL **QUALITY**  
IMPROVEMENT COLLABORATIVE

## **PC-01: *Elective Delivery***

\*Data collected via the EWC Data Collection Tool is used to estimate TJC PC-01 Data.

## TJC Perinatal Care Core Measure (PC-01) - Rate by Quarter



# TJC Perinatal Care Core Measure (PC-01) - Numerator & Denominator

by hospital

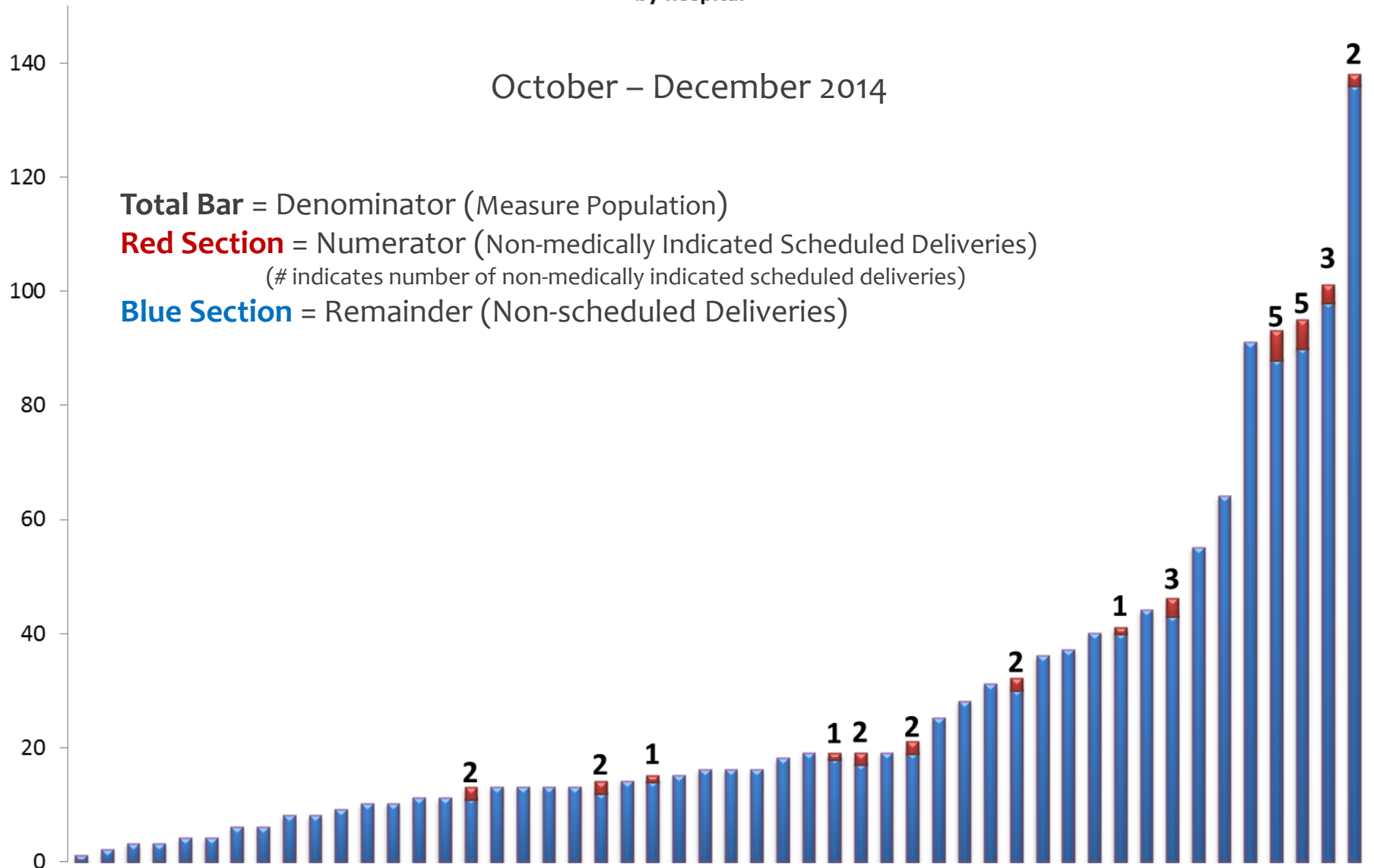
October – December 2014

**Total Bar** = Denominator (Measure Population)

**Red Section** = Numerator (Non-medically Indicated Scheduled Deliveries)

(# indicates number of non-medically indicated scheduled deliveries)

**Blue Section** = Remainder (Non-scheduled Deliveries)



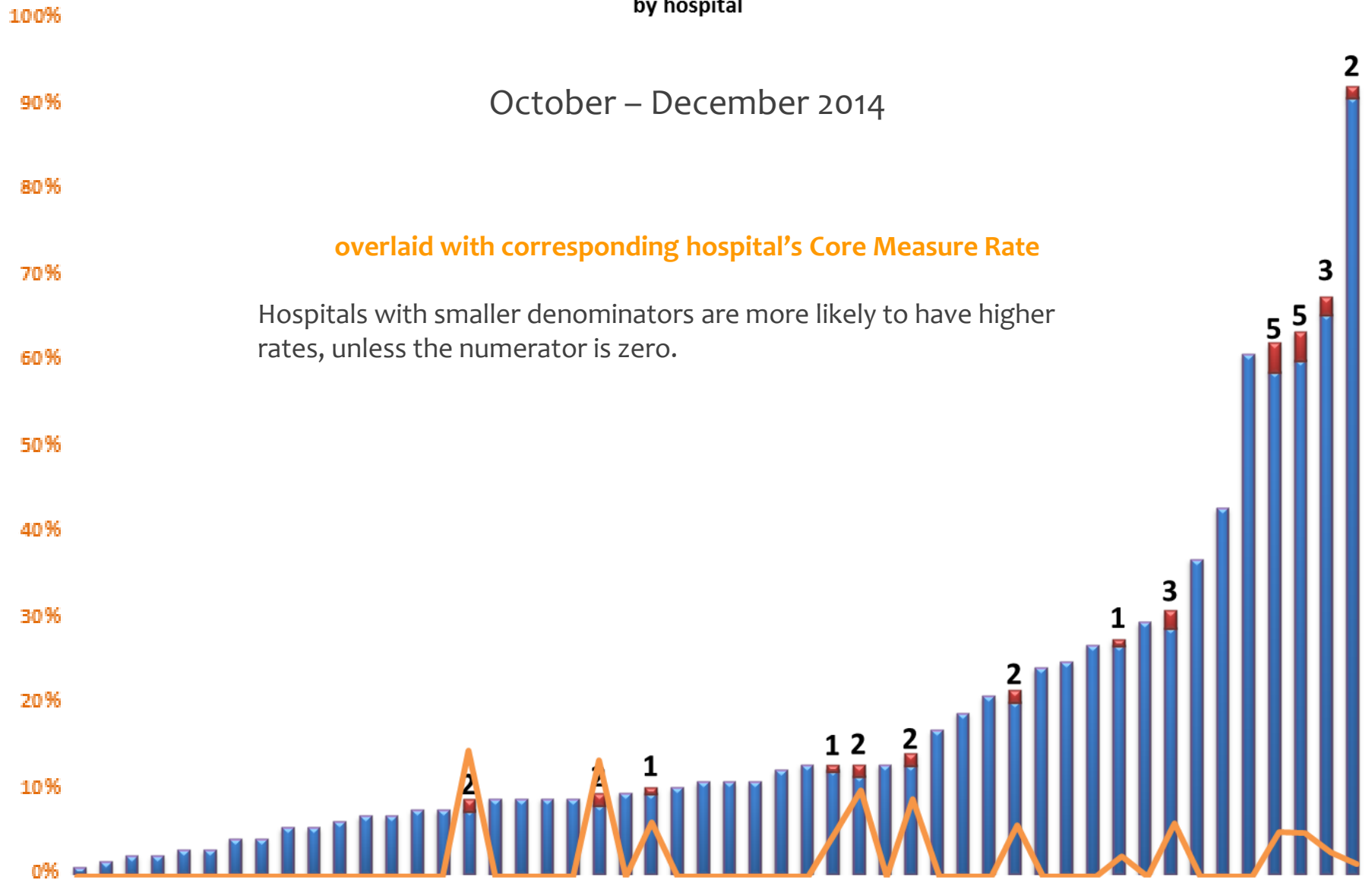
# TJC Perinatal Care Core Measure (PC-01) - Numerator & Denominator

by hospital

October – December 2014

overlaid with corresponding hospital's Core Measure Rate

Hospitals with smaller denominators are more likely to have higher rates, unless the numerator is zero.

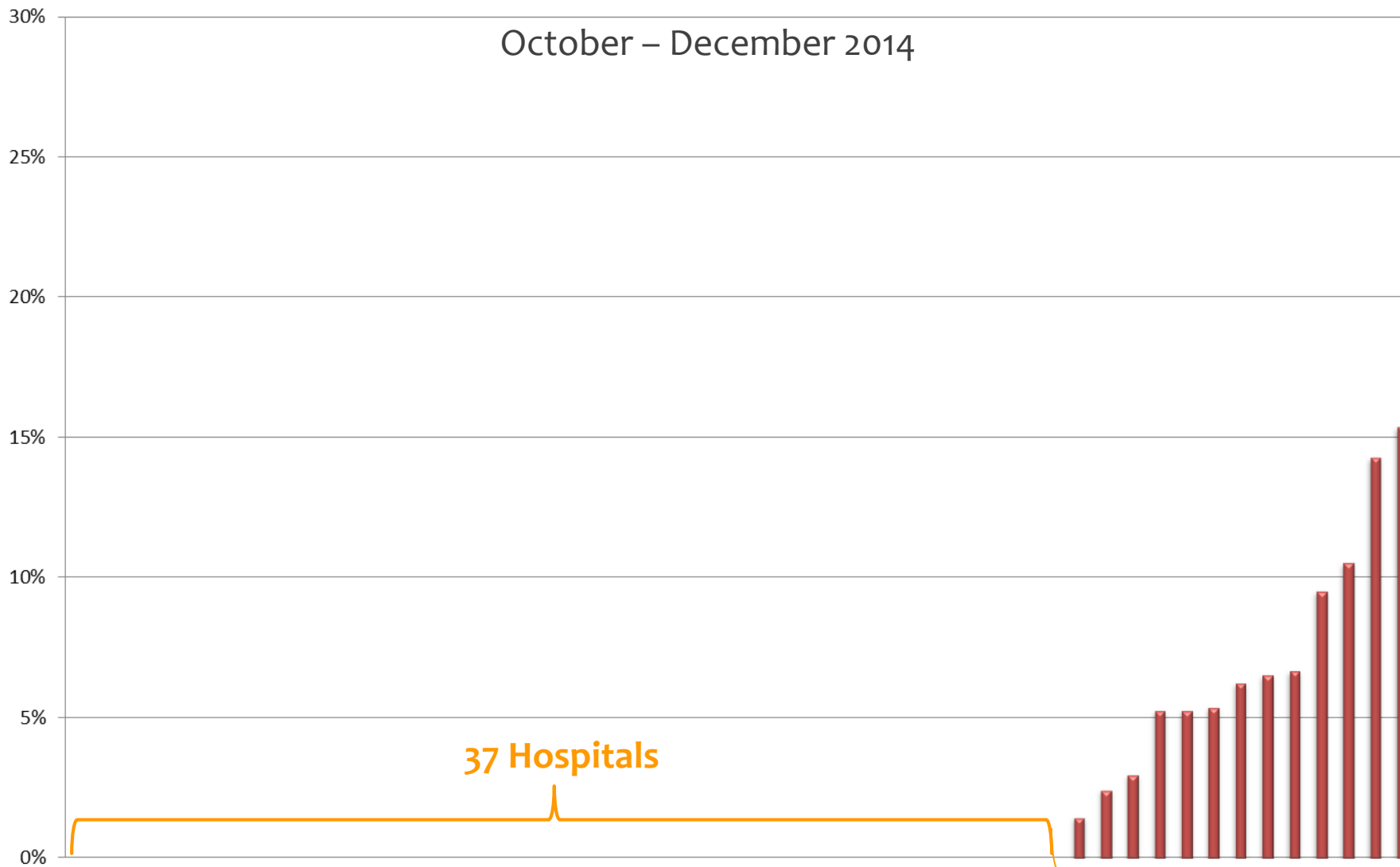


# TJC Perinatal Care Core Measure (PC-01) - Rate by Hospital

October – December 2014

37 Hospitals

13 Hospitals





# Oklahoma Birth

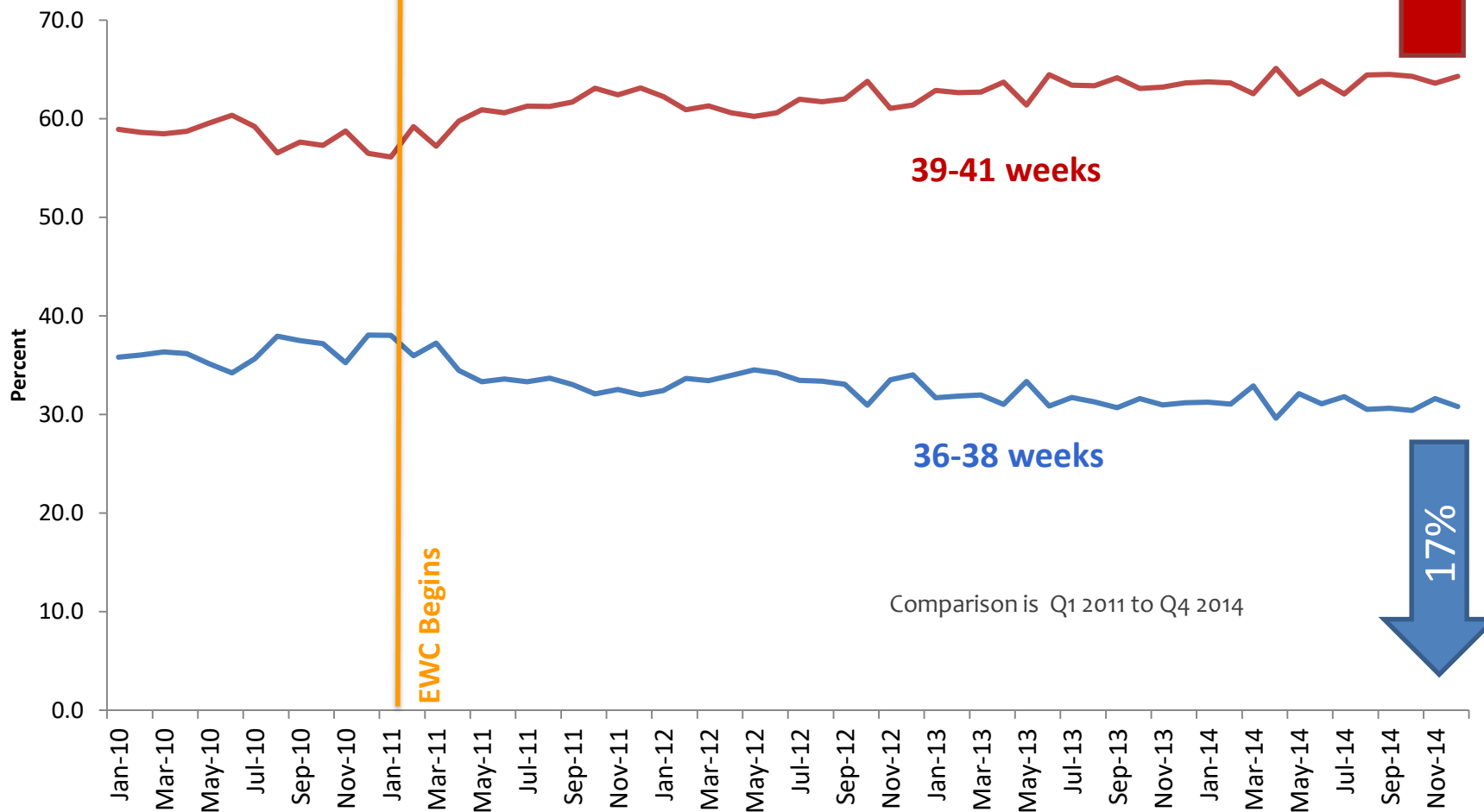


OKLAHOMA PERINATAL **QUALITY**  
IMPROVEMENT COLLABORATIVE

# Certificate Data

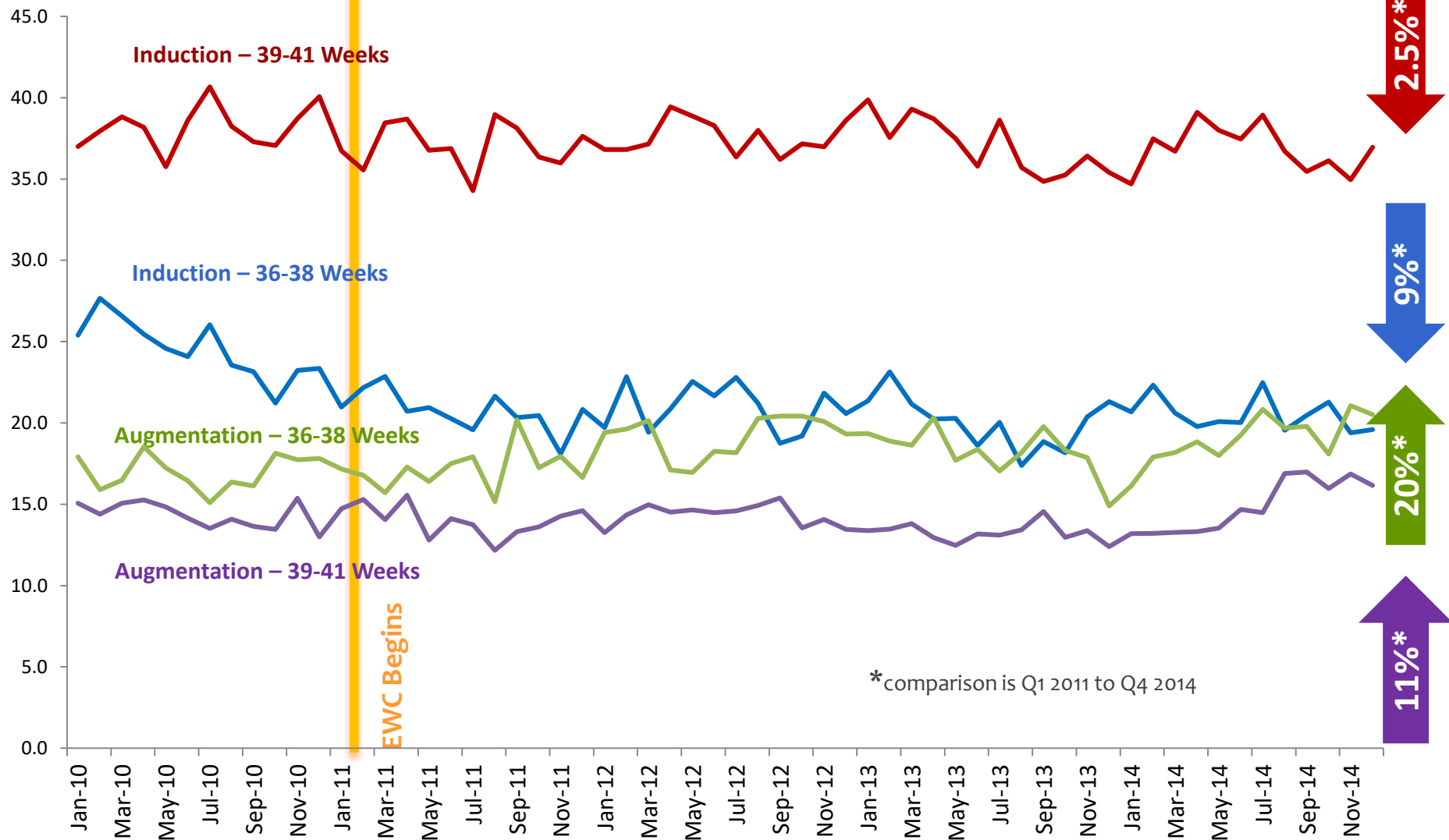
# Percent of singleton births by length of gestation: Oklahoma Jan 2010 to December 2014

Birth Certificate Data  
(2013 and 2014 data are preliminary)



# Percent of singleton births with induction of labor at 36-38 weeks and 39-41 weeks: Oklahoma, 2010-2014

(2013 and 2014 data are preliminary)





**OKLAHOMA PERINATAL QUALITY**  
IMPROVEMENT COLLABORATIVE

