

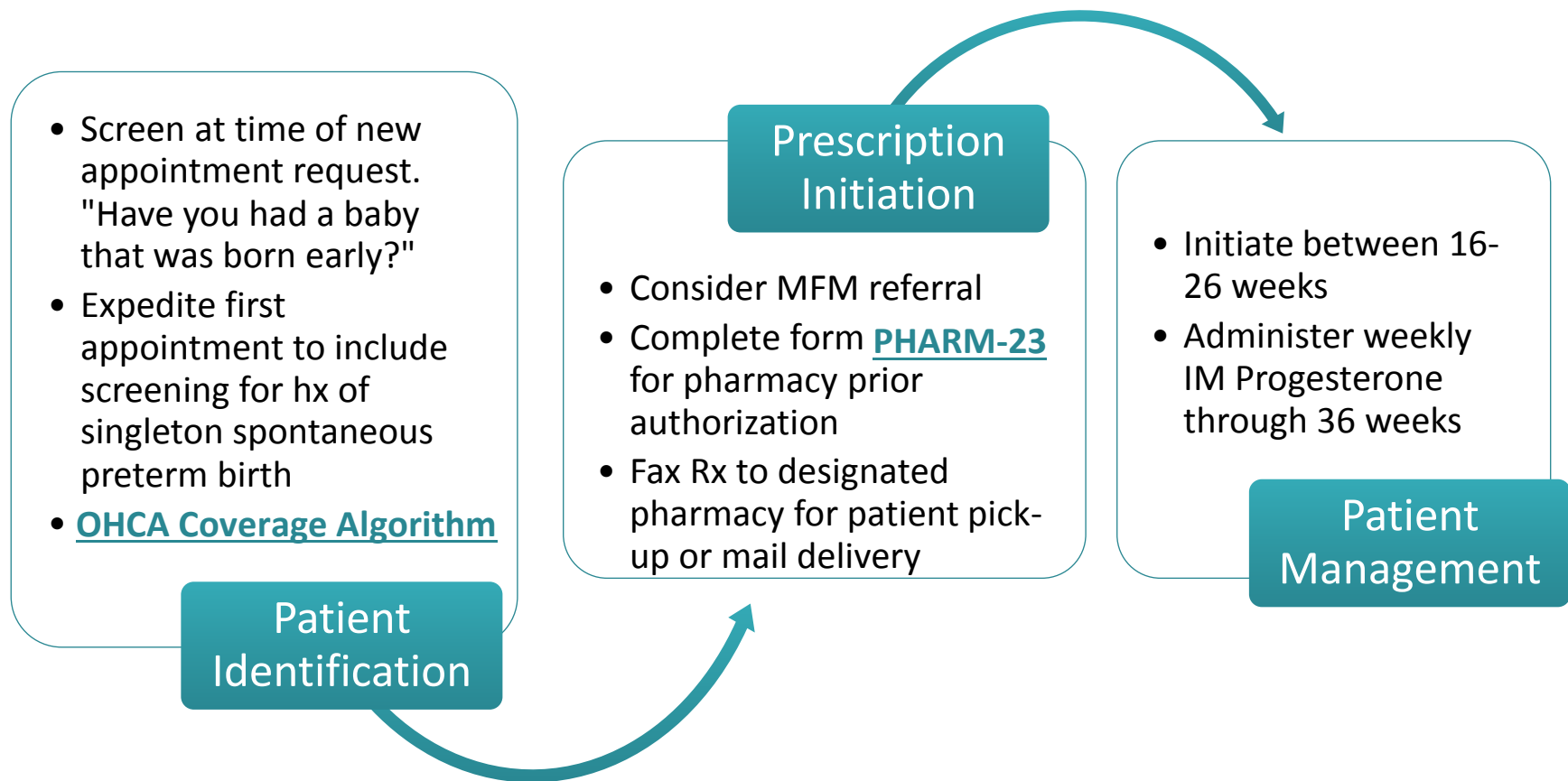
# SoonerCare Guideline for Provision of Progesterone Prophylaxis of Preterm Birth



OKLAHOMA PERINATAL QUALITY  
IMPROVEMENT COLLABORATIVE

Oklahoma  
**HealthCare**  
Authority

# SoonerCare Progesterone Guideline – Intramuscular Administration



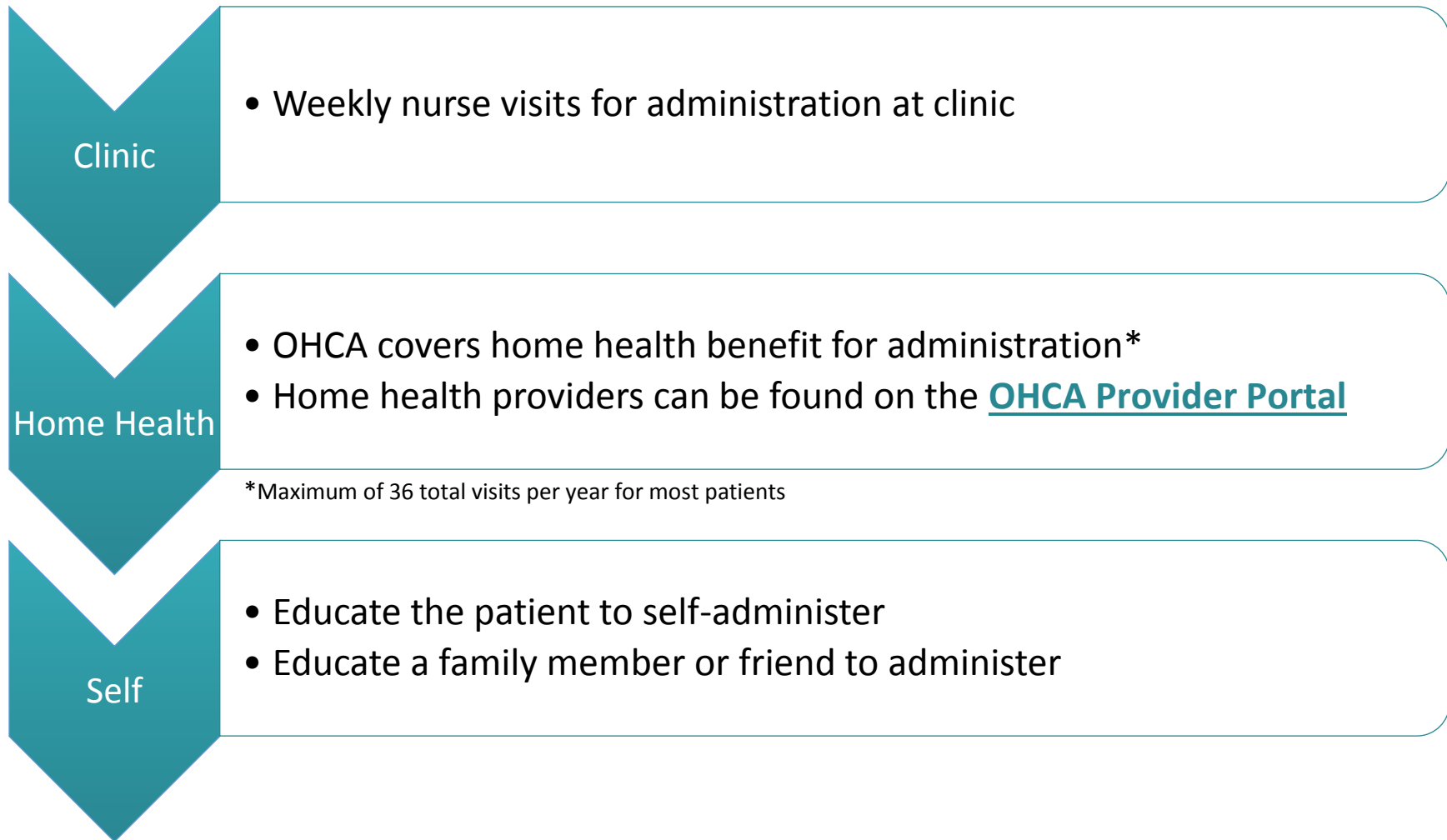
This guideline is effective August 1, 2016 and is subject to change. For more details regarding coverage, refer to [provider letter OHCA 2016-08](#) available at <http://www.okhca.org>.

This guideline is effective August 1, 2016 and is subject to change. For more details regarding coverage, refer to [provider letter OHCA 2016-08](http://www.okhca.org) available at <http://www.okhca.org>.

V1.0 9/16

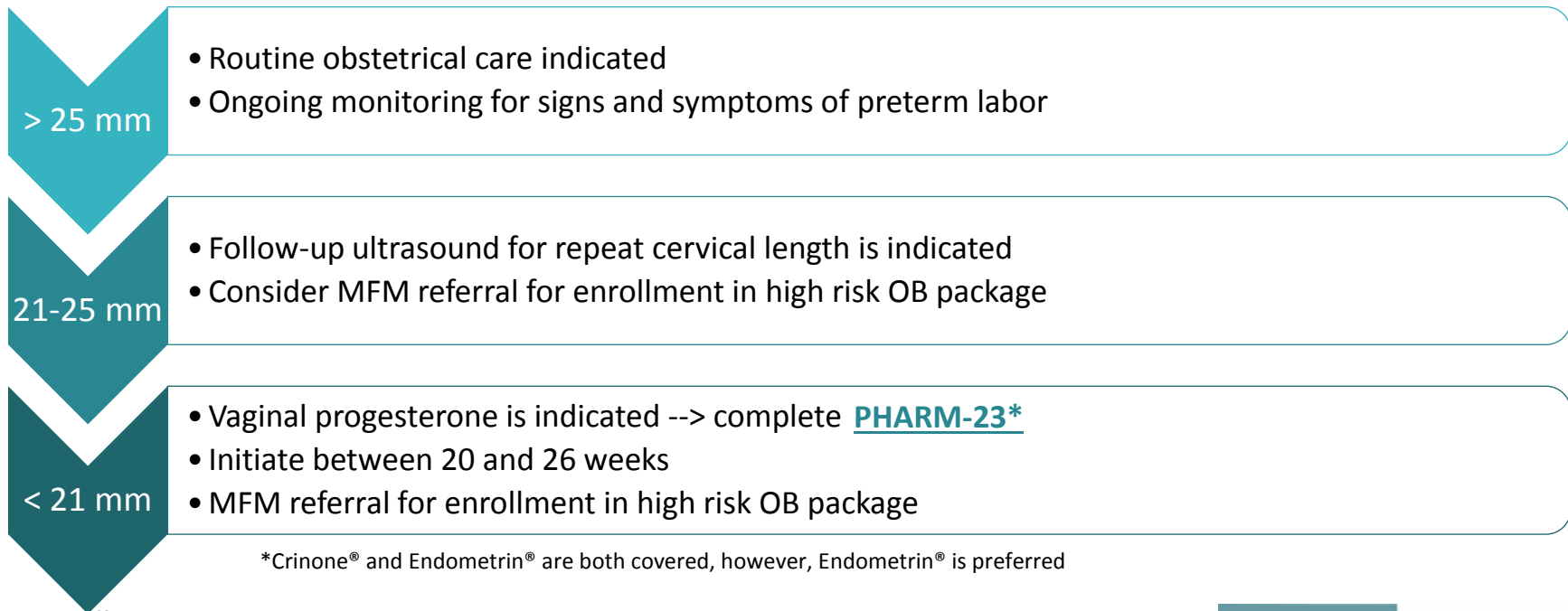
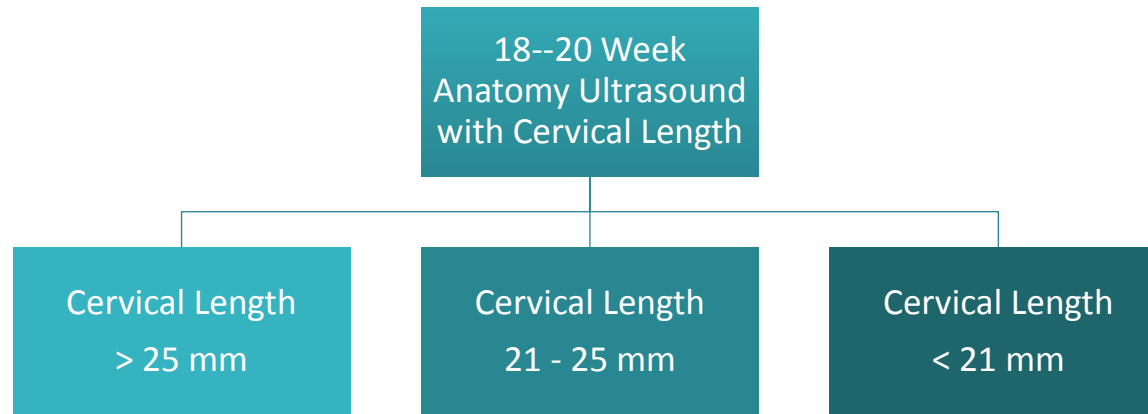


# SoonerCare Options for Intramuscular Administration of Progesterone



This guideline is effective August 1, 2016 and is subject to change. For more details regarding coverage, refer to [provider letter OHCA 2016-08](#) available at <http://www.okhca.org>.

# SoonerCare Progesterone Guideline – Vaginal Administration



This guideline is effective August 1, 2016 and is subject to change. For more details regarding coverage, refer to [provider letter OHCA 2016-08](#) available at <http://www.okhca.org>.